



# THE POINT

AT LAS COLINAS

300 E JOHN CARPENTER FWY



**CBRE**



# MODERN CONVENIENCE

**403,429 RSF**  
Building Size

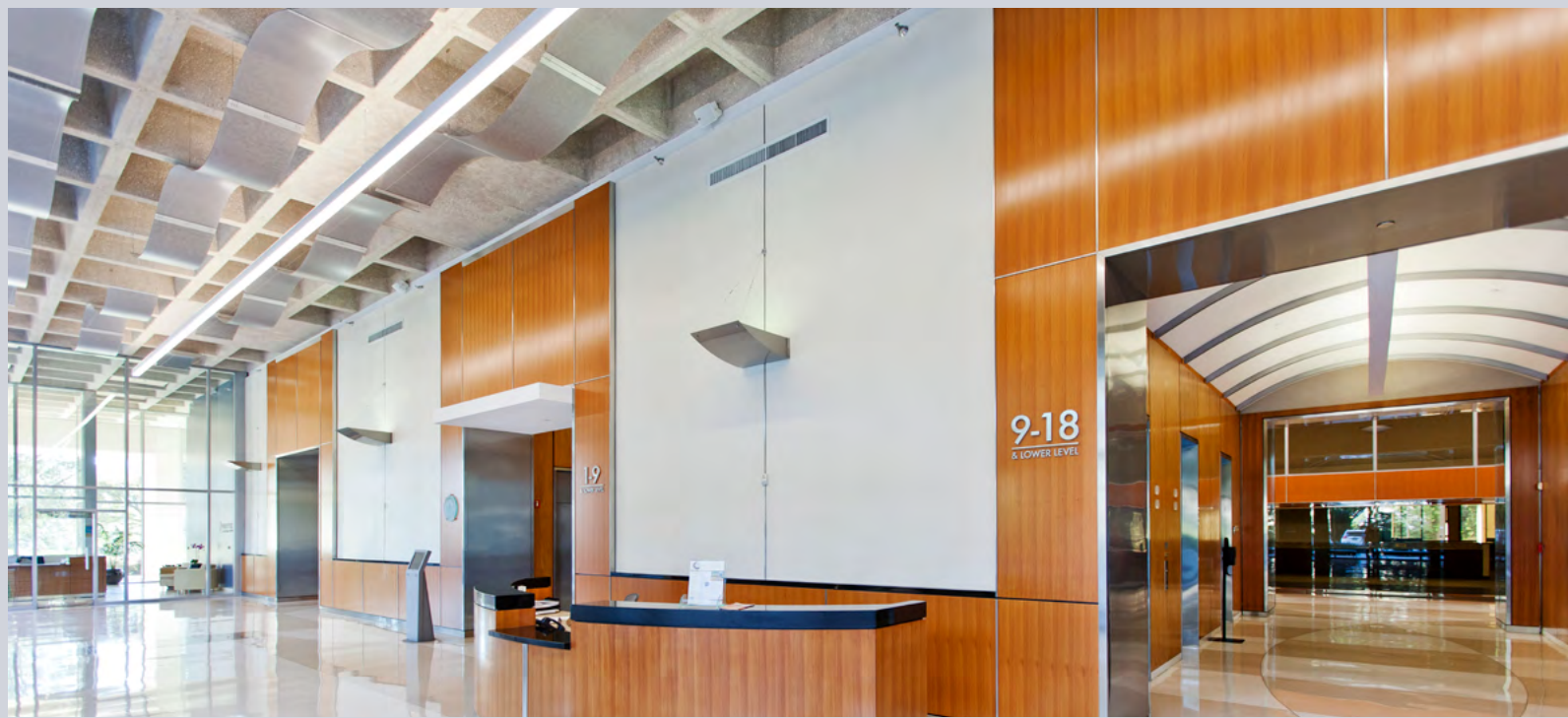
**Certified LEED**  
Silver and Energy Star Rated

**18**  
Stories

**On-Site**  
Property Management &  
Engineering

**4/1,000**  
Parking Structured &  
Garage

**24/7**  
Security with Key  
Card Access

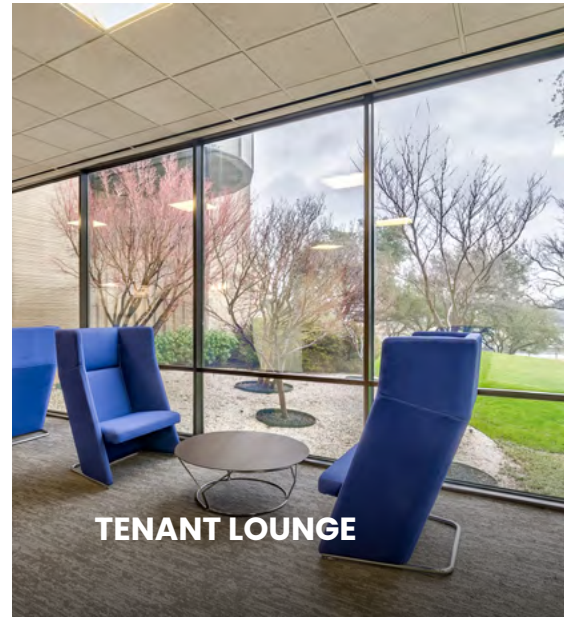




**FULL-SERVICE CAFÉ** with New Coffee Bar



**Modern CONFERENCE CENTER**



**TENANT LOUNGE**

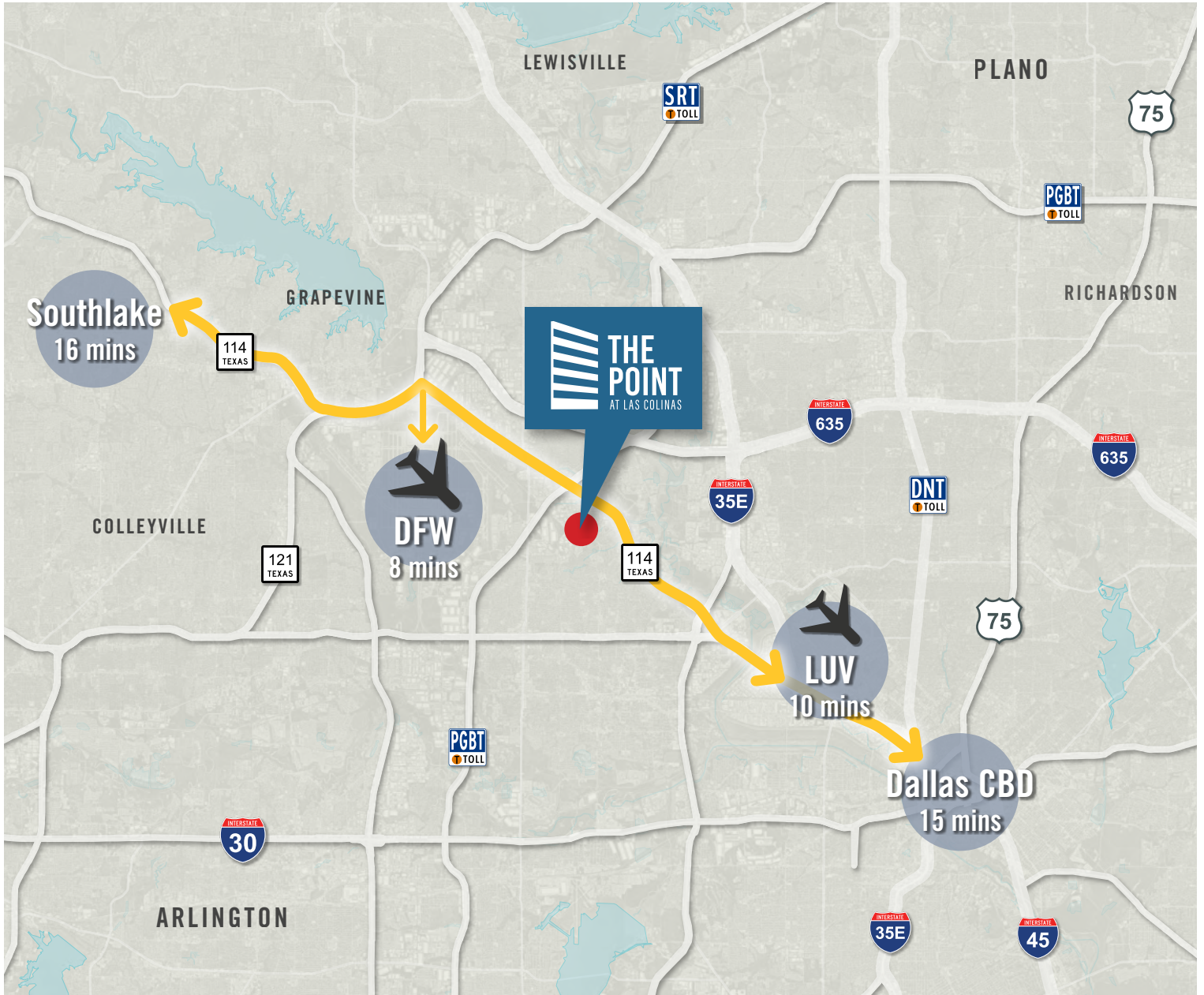


**Building SHOWER FACILITIES**



**4,500 SF FITNESS CENTER**

# PRIME CONNECTIVITY



## NEARBY AMENITIES

 **8 minutes**  
to DFW International Airport

 **10 minute walk**  
to DART Light Rail Station

 **3**  
Country Clubs

**10 minutes**  
to Dallas Love Field

 **40+**  
Restaurants

 **15+**  
Hotels

114

Holiday Inn Express & Suites

Mandalay Canal

Irving Convention Center

Lake Carolyn

Valencia Texican Court Hotel

Westin Hotel

Toyota Music Factory

W NORTHWEST HWY  
PROMENADE PKWY



The Ritz-Carlton  
Dallas, Las Colinas

Dallas Marriott Las Colinas

Williams Square

Urban Towers

W BRUNE WAY

NORTH O'CONNOR BLVD

Water Street

Omni Mandalay Hotel



NORTH O'CONNOR BLVD

JOHN CARPENTER FRWY

LAKE CAROLYN



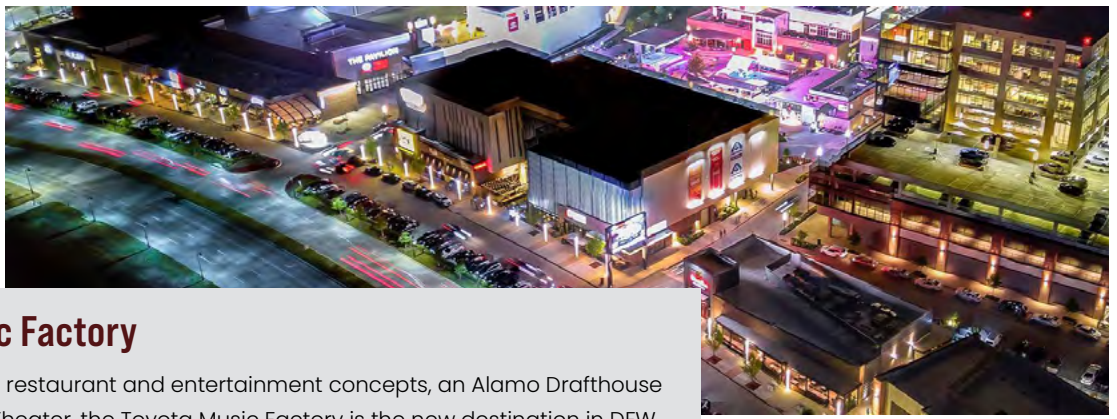
SHUTTLE SERVICE TO  
WATER STREET DEVELOPMENT

114

Las Colinas  
Country Club



# ATTRACTIONS



## Music Factory

With 25 restaurant and entertainment concepts, an Alamo Drafthouse Movie Theater, the Toyota Music Factory is the new destination in DFW.



## Irving Convention Center

The \$133 million Irving Convention Center at Las Colinas is situated in the heart of the Las Colinas Urban Center – Irving's international business district.



## Water Street

The 14-acre urban mixed use destination located at the shores of Lake Carolyn features almost 60,000 square feet of shops and restaurants plus hundreds of apartments.

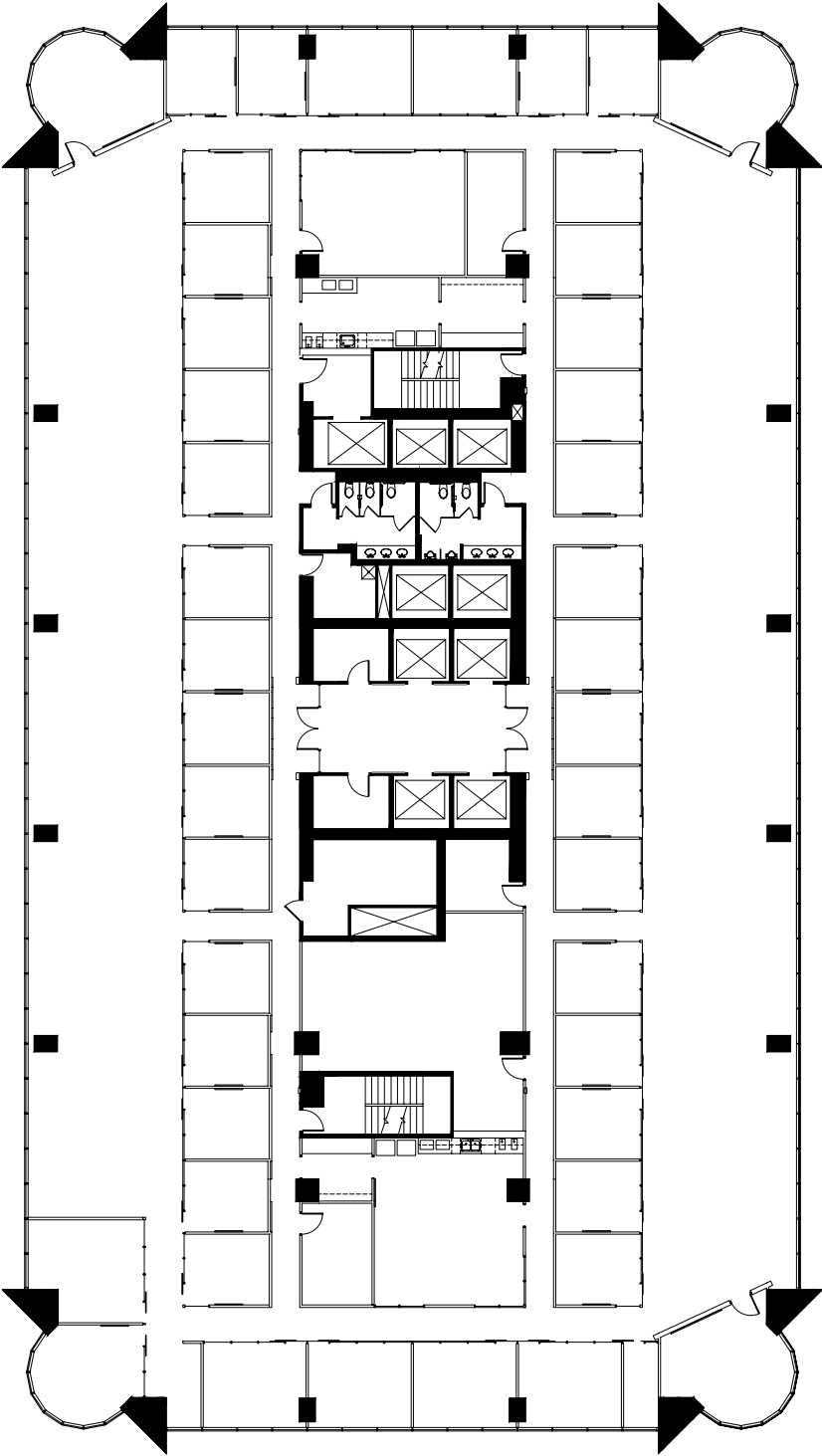


## La Colinas Country Club

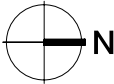
A premier private club renowned for its luxurious amenities and picturesque setting. Nestled amidst rolling hills and scenic landscapes, it features a championship 18-hole golf course, tennis courts, a state of the art fitness center, swimming pools, and elegant dining options.



# TYPICAL FLOOR PLATE



SUITE 800 | 22,904 SF

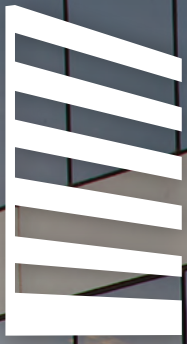


**Efficient**  
Floor Plates

**≈22K SF**  
Average Size

**Great Views**  
From Entire Floor





# THE POINT

AT LAS COLINAS

300 E JOHN CARPENTER FWY

**TREY SMITH**

+1 214 979 5651  
[trey.smith@cbre.com](mailto:trey.smith@cbre.com)

**ALEXANDRA CULLINS**

+1 214 979 6389  
[alexandra.cullins@cbre.com](mailto:alexandra.cullins@cbre.com)

**CBRE**

© 2024 CBRE, Inc. This information has been obtained from sources believed reliable. We have not verified it and make no guarantee, warranty or representation about it. Any projections, opinions, assumptions or estimates used are for example only and do not represent the current or future performance of the property. You and your advisors should conduct a careful, independent investigation of the property to determine to your satisfaction the suitability of the property for your needs.