

Battleground Commons

Freestanding Retail Strip Center

Battleground Commons is a 24,590± square foot shopping center located 2 miles from downtown Greensboro. The center features a diverse mix of national, regional, and local tenants including IHOP, Outback Steakhouse, State Farm, uBreakiFix, Greensboro Dance Theatre, Pigtales & Crewcuts, and Hertz Rental Cars. Excellent location with high visibility from Battleground Avenue and Lawndale Drive.

- + Total Square Feet: 24,590± SF
- + Available Square Feet: 1,884± SF
- + Parking Ratio: 1/114 SF
- + Surrounded by several affluent neighborhoods with excellent nearby demographics
- + Easy access to US-220, Bryan Blvd, W. Wendover Ave and Green Valley Office Park

2023 DEMOGRAPHICS	1 MILE	3 MILES	5 MILES
Population	6,221	88,714	223,170
Households	3,005	34,844	91,255
Average Household Income	\$123,305	\$104,183	\$86,132
Daytime Population	17,650	133,129	270,316
Average Value of Owner Occ. Housing Units	\$356,224	\$336,629	\$280,720

Source: CBRE Fast Reports

Contact Us

Lydia Whitley

Vice President

+1 336 714 0385

lydia.whitley@cbre-triad.com

1603-1619 Westover Terrace
Greensboro, NC 27408

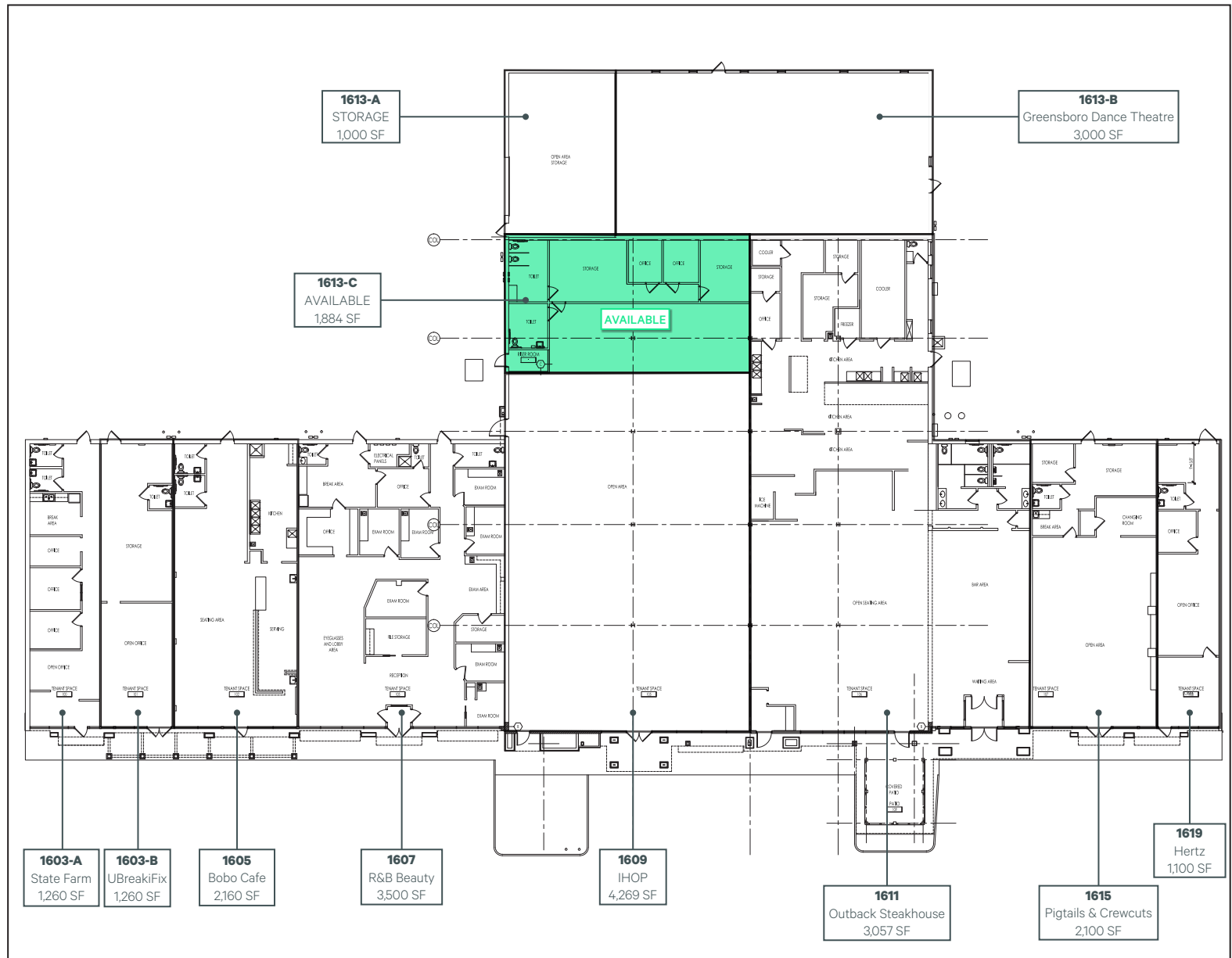


Battleground Commons

1603-1619 Westover Terrace | Greensboro, NC 27408



Suite	Tenant	SF
1603-A	State Farm	1,260
1603-B	UBreakiFix	1,260
1605	Bobo Cafe	2,160
1607	R&B Beauty	3,500
1609	IHOP	4,269
1611	Outback Steakhouse	3,057
1613-A	Storage	1,000
1613-B	Greensboro Dance Theatre	3,000
1613-C	AVAILABLE	1,884
1615	Pigtails & Crewcuts	2,100
1619	Hertz	1,100
	TOTAL	24,590



© 2024 CBRE, Inc. This information has been obtained from sources believed reliable. We have not verified it and make no guarantee, warranty or representation about it. Any projections, opinions, assumptions or estimates used are for example only and do not represent the current or future performance of the property. You and your advisors should conduct a careful, independent investigation of the property to determine to your satisfaction the suitability of the property for your needs.

Battleground Commons

1603-1619 Westover Terrace | Greensboro, NC 27408

