

For Lease

CBRE

Braden Park

7170 South Braden Avenue
Tulsa, OK 74136

Suite 140



Property Description

Welcome to Braden Park, a premier office building located in the heart of desirable South Tulsa. This high-quality garden style office building offers a professional environment complemented by convenient access to a variety of popular amenities, including shopping, dining, and hotels. Featuring suites with private entrances and adjacent parking, Braden Park ensures both privacy and convenience for tenants and clients alike. Just minutes from Saint Francis Hospital and the Warren Medical Complex, as well as a short drive to the prestigious Southern Hills Country Club, Braden Park is the ideal location for businesses seeking a well-connected and vibrant community.



Garden-Style office building



Desireable South Tulsa location



8 minute drive to Southern Hills Country Club



Minutes from Saint Francis Hospital and Warren Medical Complex



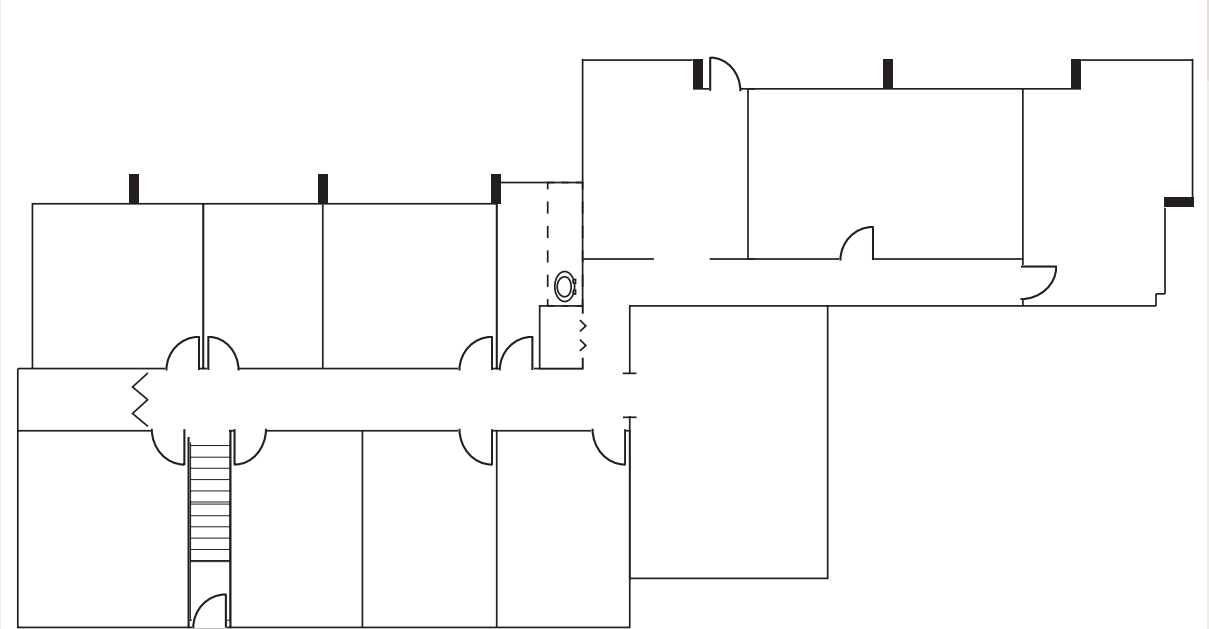
Minutes to the Creek Turnpike



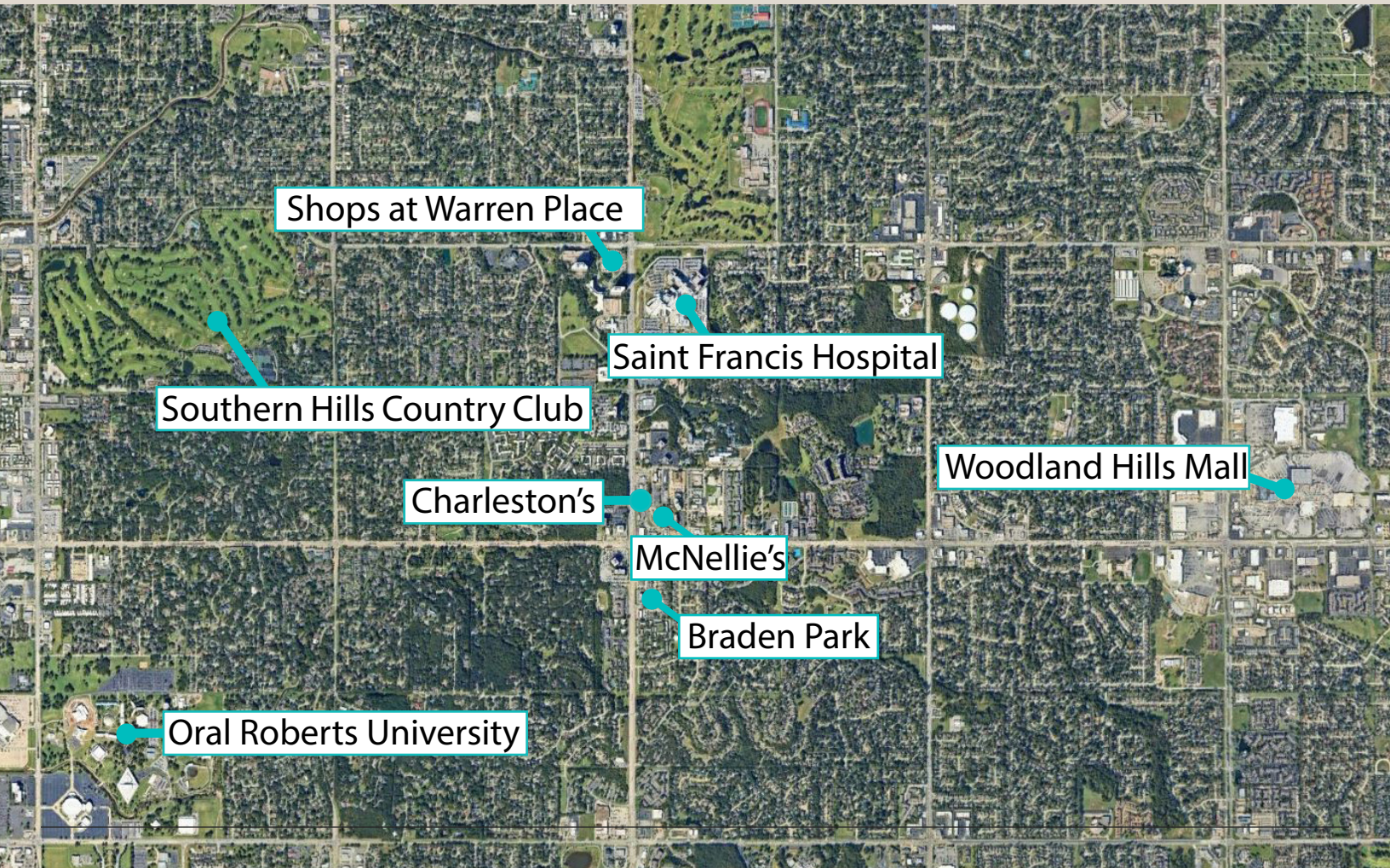
Floorplan

- Suite 140: 2,742 ± Rentable Square Feet

*Assessor



Area Amenities





Braden Park

Terry Payne, SIOR

Vice President

+1 918 392 7267

terry.payne@cbre.com

© 2026 CBRE, Inc. All rights reserved. This information has been obtained from sources believed reliable but has not been verified for accuracy or completeness. CBRE, Inc. makes no guarantee, representation or warranty and accepts no responsibility or liability as to the accuracy, completeness, or reliability of the information contained herein. You should conduct a careful, independent investigation of the property and verify all information. Any reliance on this information is solely at your own risk. CBRE and the CBRE logo are service marks of CBRE, Inc. All other marks displayed on this document are the property of their respective owners, and the use of such marks does not imply any affiliation with or endorsement of CBRE. Photos herein are the property of their respective owners. Use of these images without the express written consent of the owner is prohibited.

CBRE