

Office | For Lease

CBRE

TFC Plaza

Advantageous Suburban Offices

6770 South 900 East
Midvale, Utah

4,298 SF Available Now

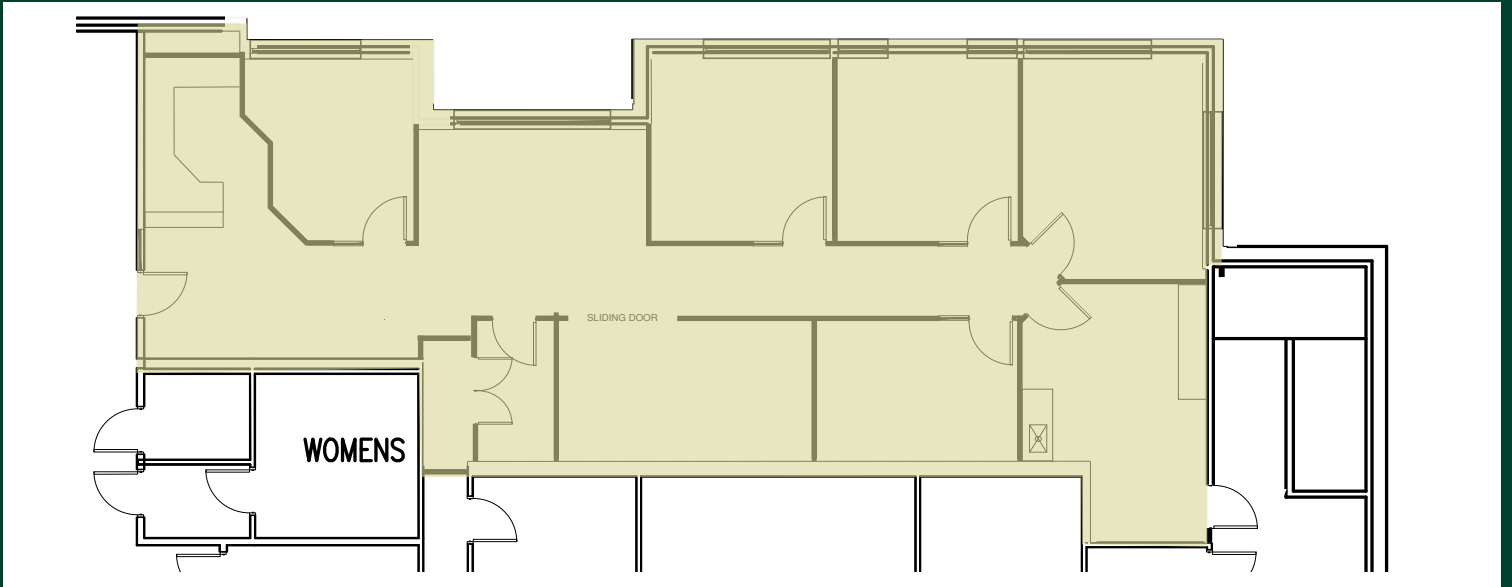


TFC PLAZA

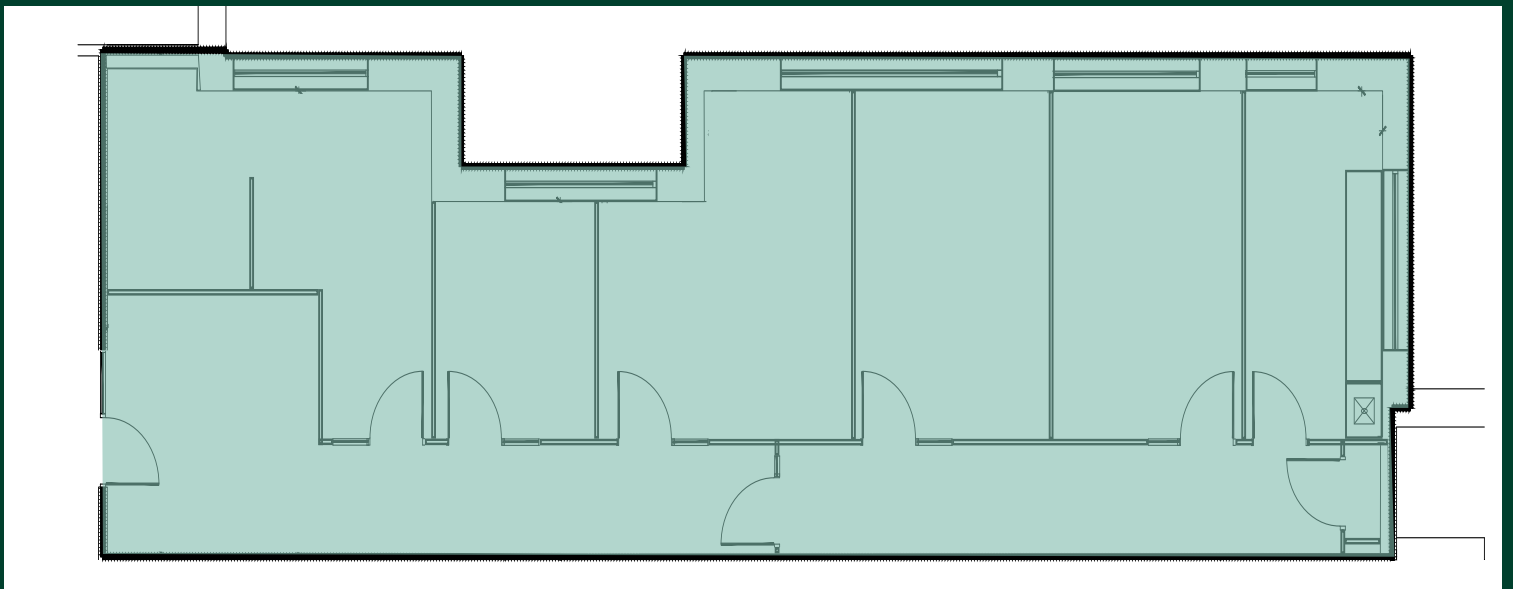
16770 South 900 East | Midvale, Utah

Available Spaces

Suite 102 - 2,376 RSF



Suite 200 - 1,922 RSF



Space Details

Excelent Suburban Office

- + Lease Rate: \$21/SF, Full Service
- + Great Freeway Access
- + On-site Management
- + **Up to 4,368 SF Available Now**
- + Covered Parking
- + Central location with multiple ammenities nearby



Map



Contact Us

Eric Smith
Senior Vice President
+1 801 869 8008
eric.smith@cbre.com

Kreg Peterson
First Vice President
+1 801 869 8028
kreg.peterson@cbre.com

© 202 CBRE, Inc. All rights reserved. This information has been obtained from sources believed reliable, but has not been verified for accuracy or completeness. You should conduct a careful, independent investigation of the property and verify all information. Any reliance on this information is solely at your own risk. CBRE and the CBRE logo are service marks of CBRE, Inc. All other marks displayed on this document are the property of their respective owners, and the use of such logos does not imply any affiliation with or endorsement of CBRE. Photos herein are the property of their respective owners. Use of these images without the express written consent of the owner is prohibited.