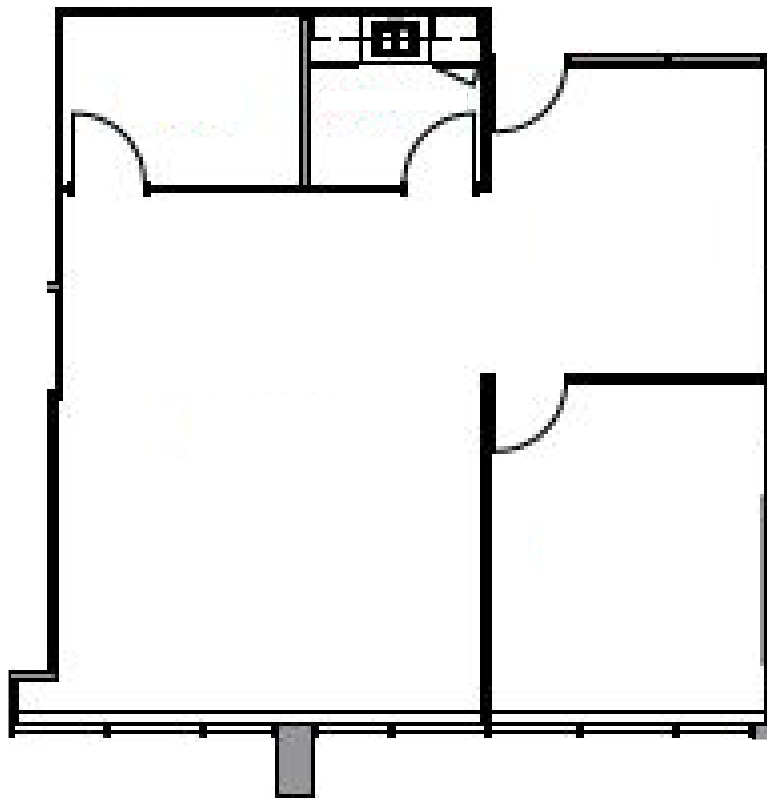


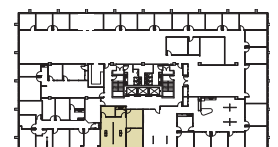
789
**SHERMAN
CENTER**

THE GOLD STANDARD

SUITE 420
1,191 SF



KEY PLAN



BLAKE HOLCOMB

First Vice President

303.583.2022

blake.holcomb@cbre.com

BRIAN HUTT

First Vice President

303.583.2041

brian.hutt@cbre.com

CBRE

CENTREPOINT
PROPERTIES