

# Pearl District Creative Office

For Lease

1044 NW 9TH AVE | PORTLAND, OR 97209



2 Suites Available  
8,013-12,513 RSF

Presented By:

**KEVIN KAUFMAN**

First Vice President

+1 503 221 4808

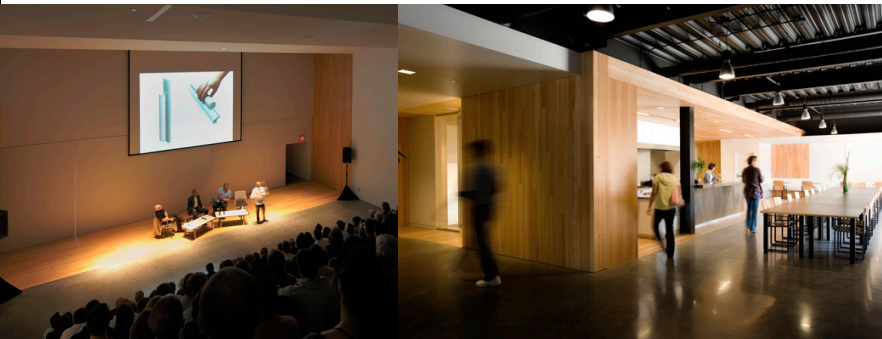
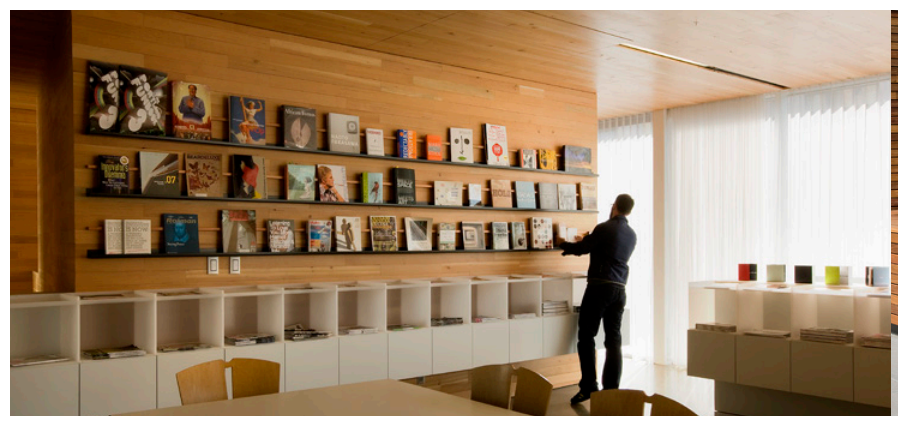
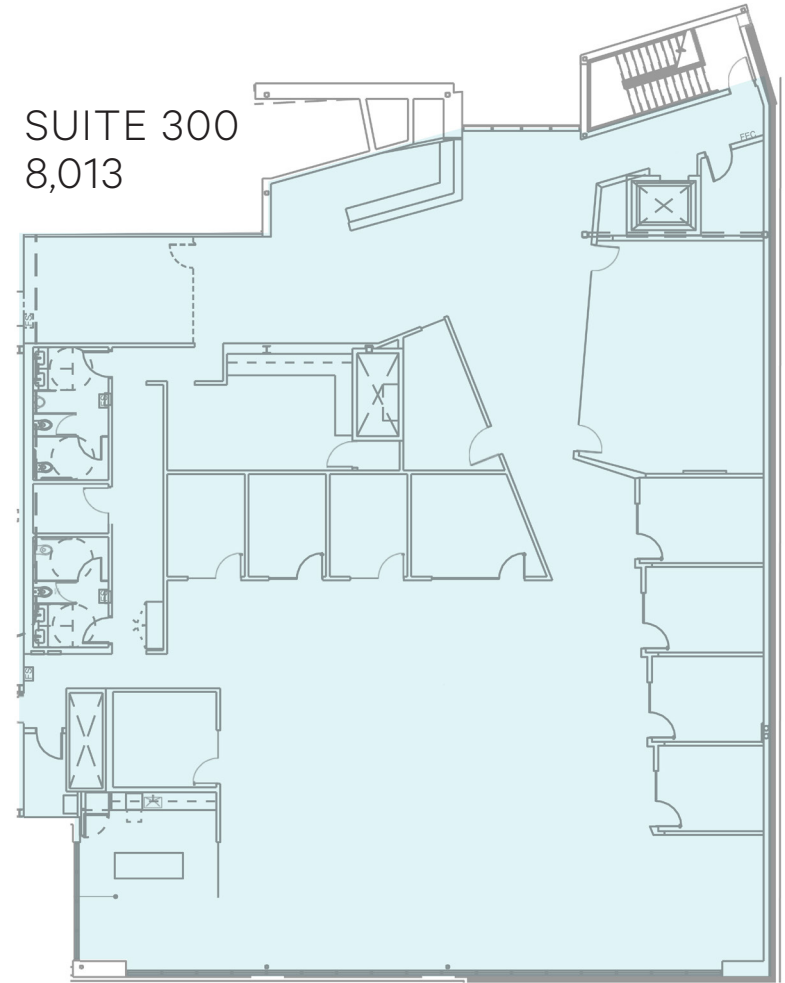
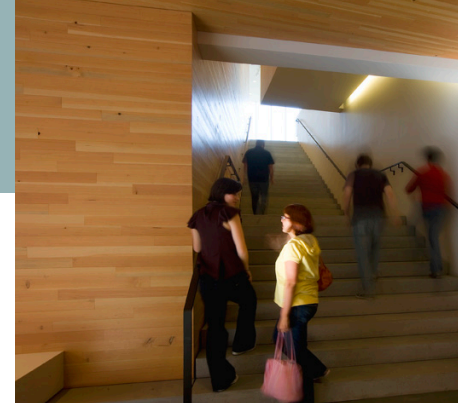
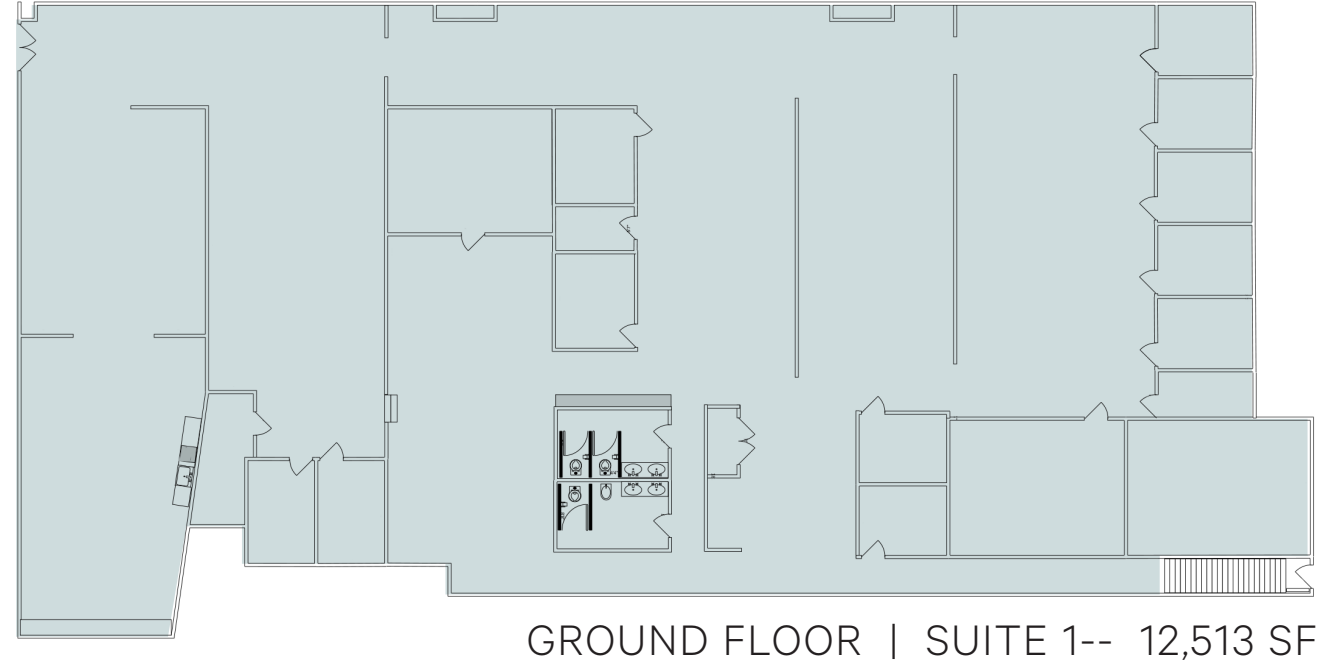
kevin.kaufman@cbre.com

**CBRE**

# The Offering

A beautiful institutional quality asset located in the active and safe Pearl District with direct access to cafes, full service restaurants, hotels and transit options such as the Portland Streetcar, Bus and MAX service.

The space is fully built out and with highly functional mix of open and private work spaces. The building also offers use of a 200 person auditorium, in-building bikes parking and locker rooms. Parking is available directly adjacent to the building in the Station Place garage.



# Pearl District Location









# Pearl District Creative Office

For Lease

1044 NW 9th Ave | Portland, OR 97209

**FOR MORE INFORMATION PLEASE CONTACT**

**KEVIN KAUFMAN**  
 Licensed in OR & WA  
 +1 503 221 4808  
 kevin.kaufman@cbre.com  
 www.cbre.com/kevin.kaufman

|   |  |  |
|---|--|--|
| <p>Mix of Private Offices, Meeting Rooms, and Flexible Work Areas</p>  | <p>Large Windows and Exposed High Ceilings</p>             | <p>Bicycle Parking Area</p>             |
| <p>Shared Building Showers and Lockers</p>                             | <p>Excellent Highway and Public Transportation Access</p>  | <p>Creative Office Space For Lease</p>  |

© 2022 CBRE, Inc. This information has been obtained from sources believed reliable. We have not verified it and make no guarantee, warranty or representation about it. Any projections, opinions, assumptions or estimates used are for example only and do not represent the current or future performance of the property. You and your advisors should conduct a careful, independent investigation of the property to determine to your satisfaction the suitability of the property for your needs. Photos herein are the property of their respective owners and use of these images without the express written consent of the owner is prohibited. CBRE and the CBRE logo are service marks of CBRE, Inc. and/or its affiliated or related companies in the United States and other countries. All other marks displayed on this document are the property of their respective owners.

