

ACCENTURE TOWER

500 WEST MADISON STREET | CHICAGO, IL

Suite 1610

±5,820 SF

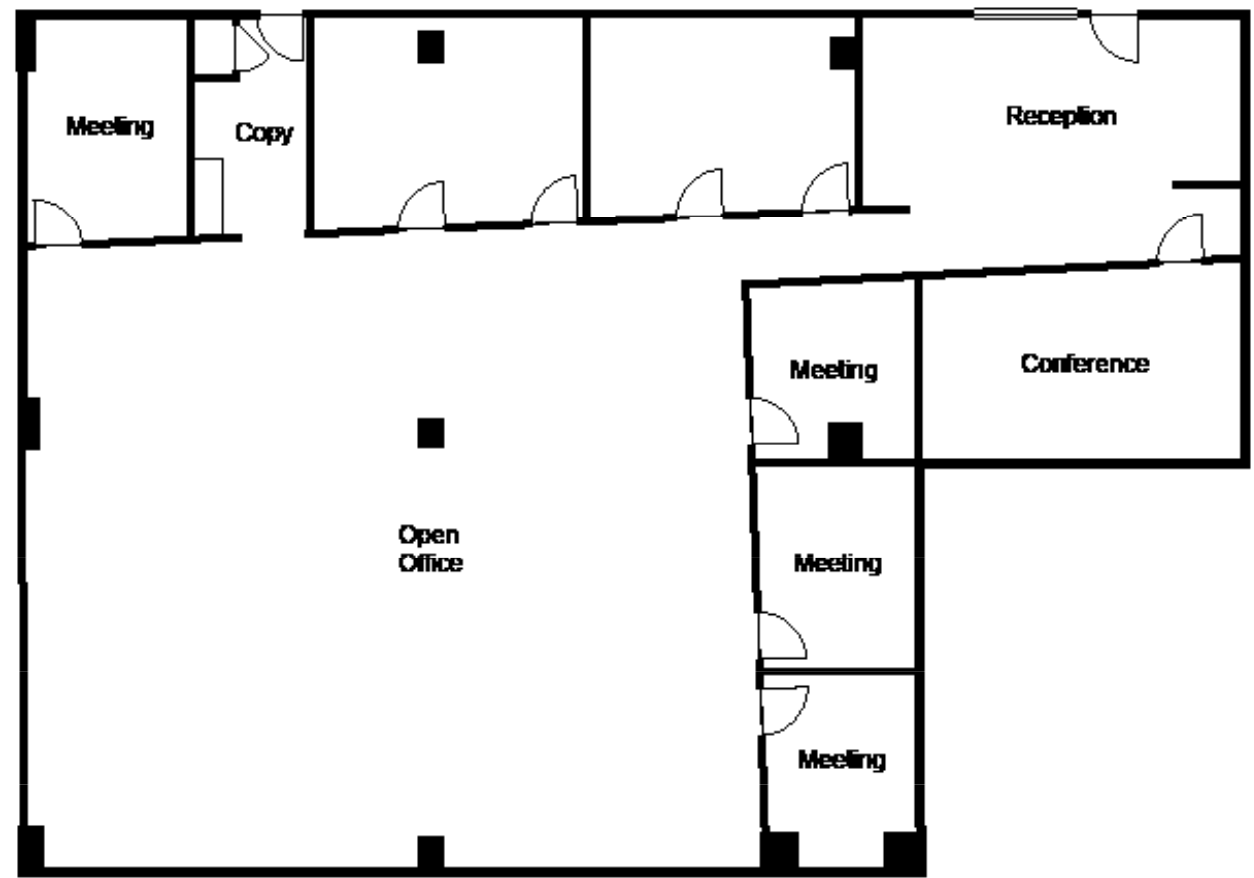
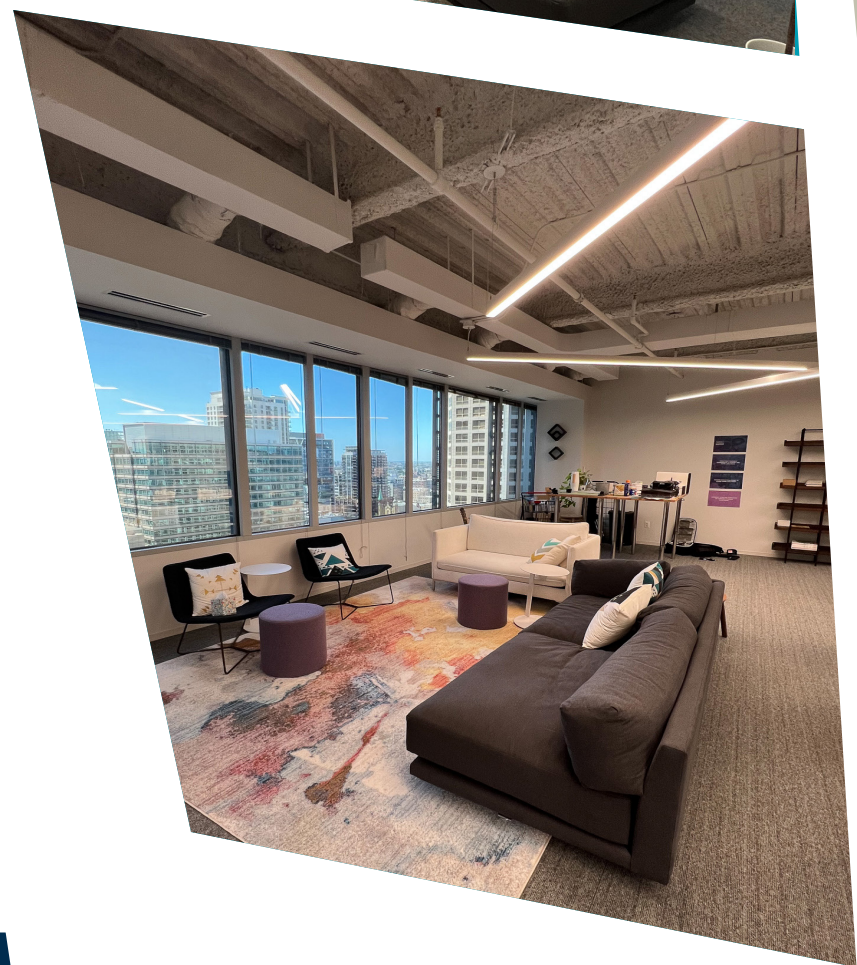
Plug & Play

CBRE





At Accenture Tower, tenants arrive at the ideal connection point between the Loop and Fulton Market. And nowhere else in Chicago can you step off your morning Metra ride and directly into your workplace. With the unmatched convenience of an in-property station, Accenture Tower is the ultimate in seamless commuting. Right outside the door, find immediate access to the L, city buses, Divvy bikes and Union Station



Suite Information

- Suite 1610, ±5,820 SF
- Plug & Play
- Term: thru May 31, 2024
- 20 Workstations with room for additional and 7 conference/huddle rooms
- Available with 30 days' notice
- Class A building with refreshed amenities

ACCENTURE TOWER

500 WEST MADISON STREET | CHICAGO, IL



MIKE SHERWOOD

+1 312 338 2013

Michael.Sherwood@cbre.com

BRIAN MCDONNELL

+1 312 416 3066

Brian.Mcdonnell@cbre.com

CBRE

© 2022 CBRE, Inc. All rights reserved. This information has been obtained from sources believed reliable, but has not been verified for accuracy or completeness. You should conduct a careful, independent investigation of the property and verify all information. Any reliance on this information is solely at your own risk. CBRE and the CBRE logo are service marks of CBRE, Inc. All other marks displayed on this document are the property of their respective owners, and the use of such logos does not imply any affiliation with or endorsement of CBRE. Photos herein are the property of their respective owners. Use of these images without the express written consent of the owner is prohibited. 09-22-2022AL