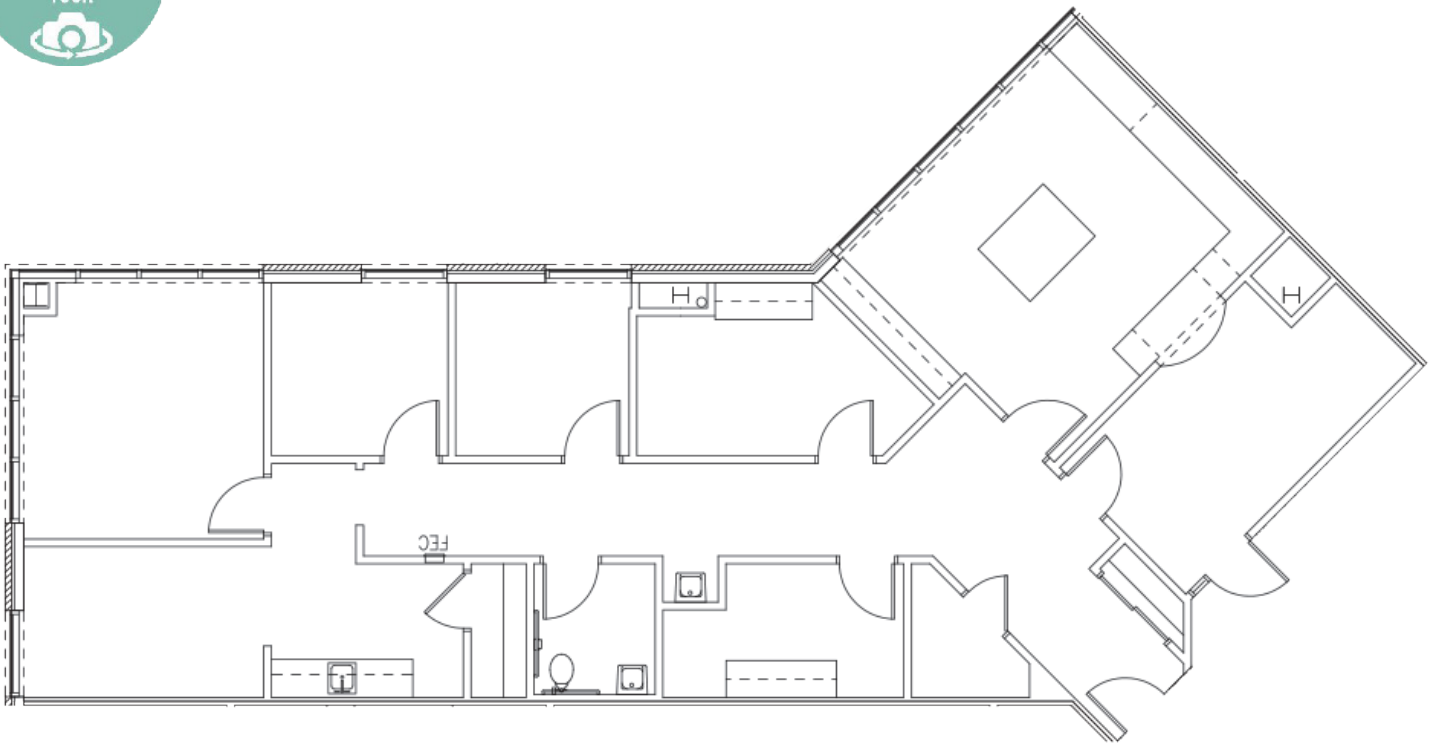


North Cypress Medical Plaza I

21216 Northwest Freeway
Cypress, TX 77429
www.cbre.com/properties

Suite 540 - 2,069 RSF



Contact Us

Angela Barber

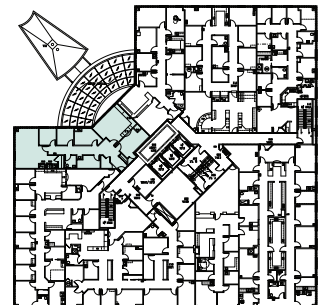
Vice President
+1 832 455 6945
angela.barber@cbre.com

Danielle Parsons

Associate
+1 713 907 8905
danielle.parsons@cbre.com

Pamela Sprouse

Vice President
+832 335 0277
pamela.sprouse@cbre.com



5th Floor