

North Cypress Medical Plaza II

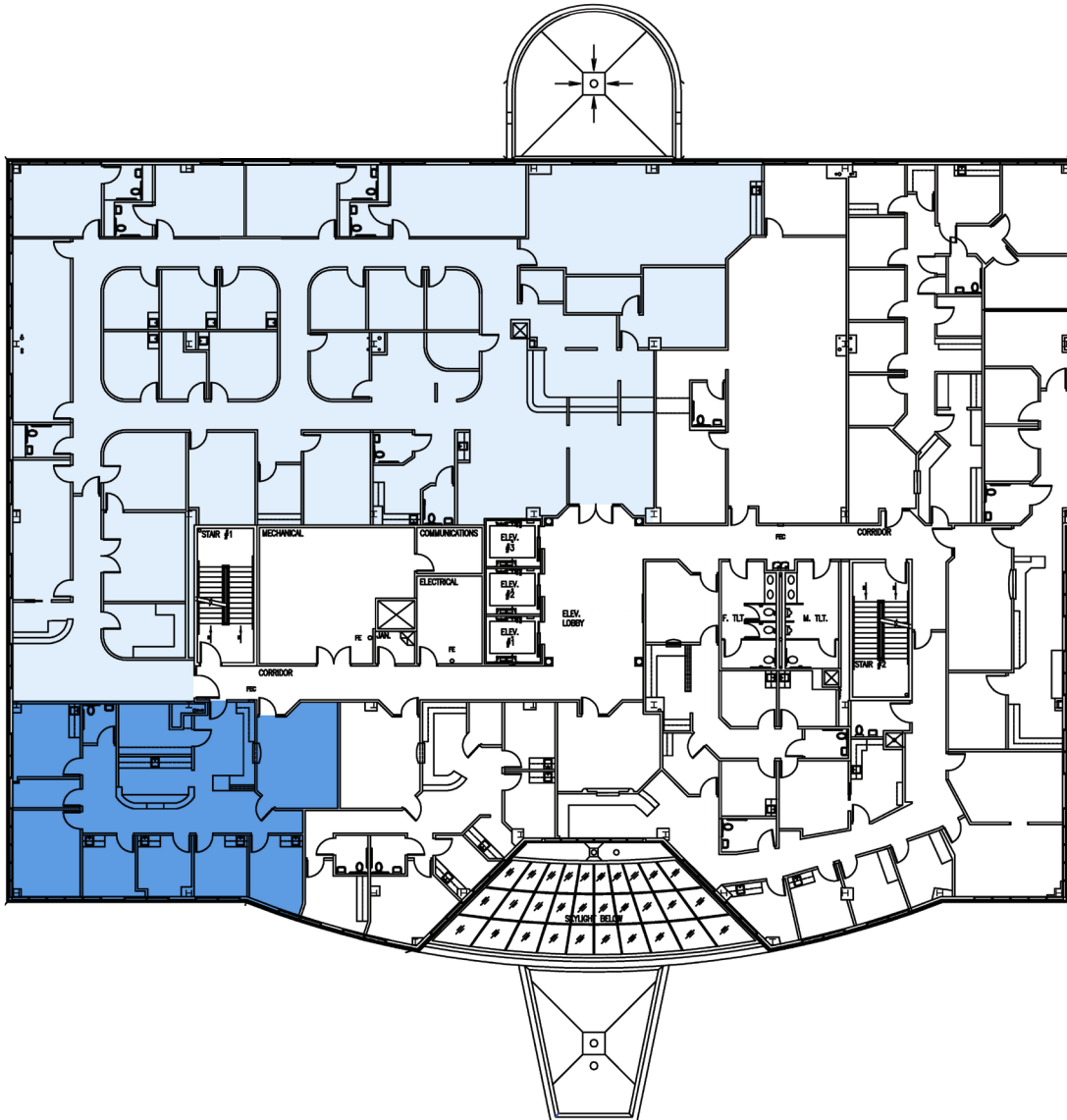
21212 Northwest Freeway
Cypress, TX 77429
www.cbre.com/properties

4th Floor Availabilities



SUITE 405
10,264 RSF

SUITE 425A
2,405 RSF
Available
5/1/2026



Contact Us

Angela Barber
Vice President
+1 832 455 6945
angela.barber@cbre.com

Danielle Parsons
Associate
+1 713 907 8905
danielle.parsons@cbre.com

Pamela Sprouse
Vice President
+1 832 335 0277
pamela.sprouse@cbre.com