

**2830 VICTORY PARKWAY**  
CINCINNATI, OH | FOR LEASE



**CBRE**

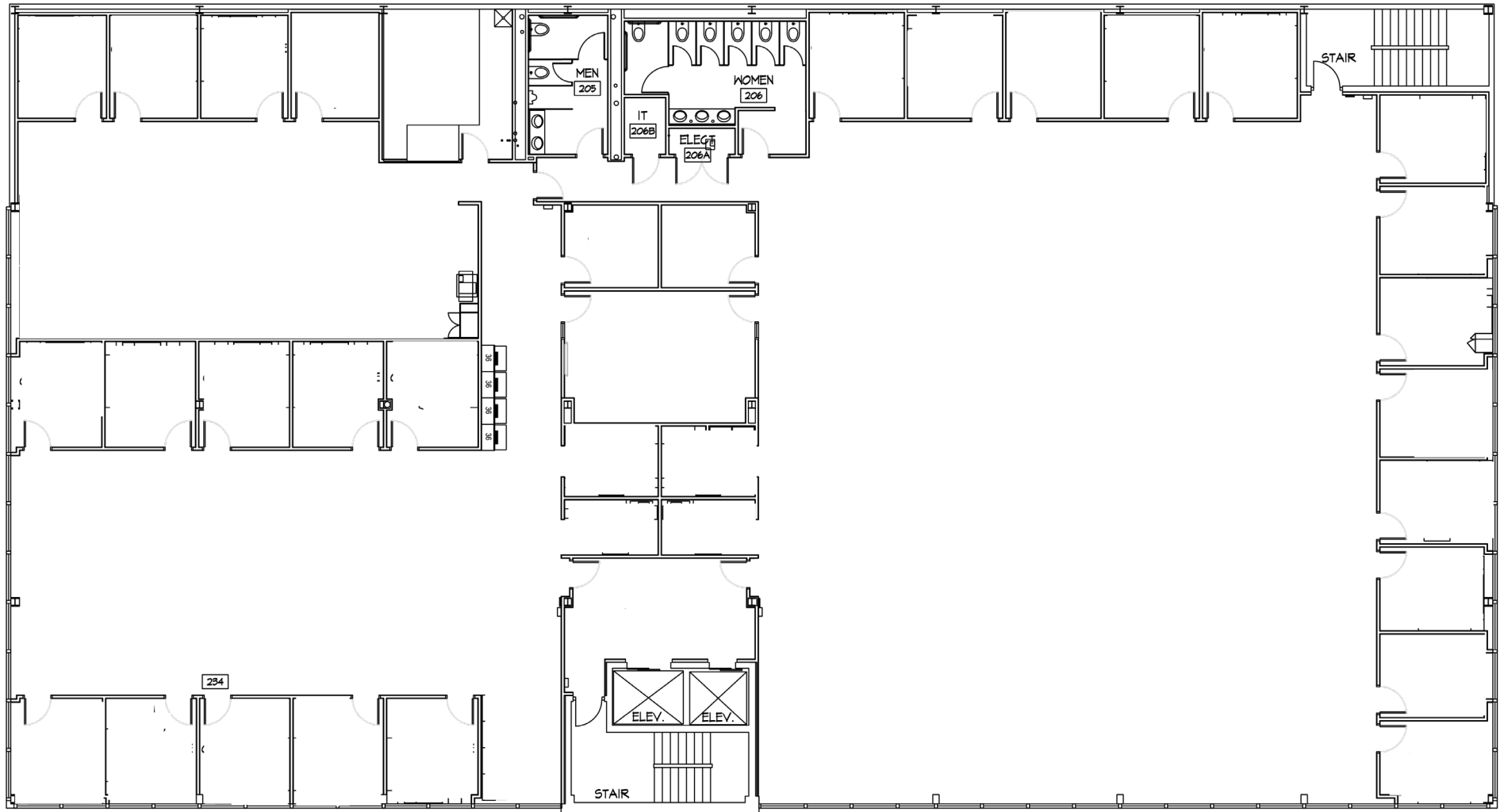
 **Health**

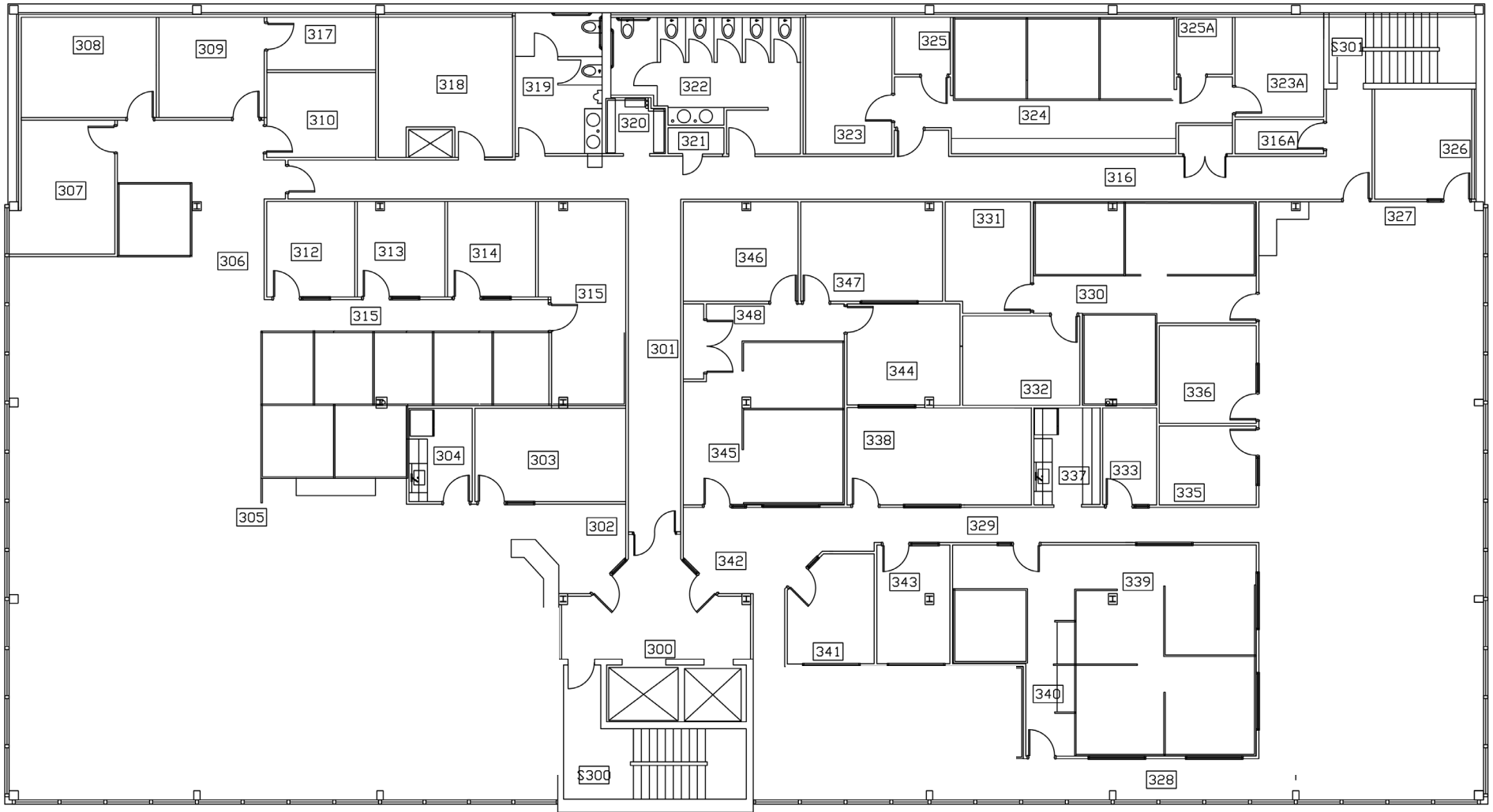
## PROPERTY FEATURES

- Availability:
  - Second Floor: 12,000 SF (will demise)
  - Third Floor: 12,000 SF (will demise)
- Asking Rate: \$24.50 FSG
- Availability Date: Immediate
- Building Size: 46,679 SF
- Year Built: 1957 and Renovated in 2004/2024.
- Part of the Cincinnati Innovation District
- Convenient access to I-71
- Updated Building Lobby
- Parking Ratio: 5;1000
- Parking:
  - Main Building - 101 Spaces
  - Supplemental Parking - 120 Spaces
  - Total: 221 Spaces
- Parking Type: Surface lot
- Zoning: Main Parcel: OL - Office Limited
  - Parking Lot: RMX - Residential Mixed







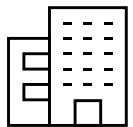




## The Cincinnati Innovation District® (CID)

is a 65-acre innovation and technology hub, integrated into the region's innovation ecosystem. Anchored by the University of Cincinnati, CID offers a unique platform for companies of all stages to connect to talent and build partnerships to accelerate innovations. More than 1.1 million square feet of new space totaling more than \$1 billion of investment has been completed or is currently underway. When fully implemented, the master plan anticipates \$2.5 billion of project investment, more than 3.5 million square feet of mixed-use development (research, office, clinical, residential, hotel, and retail) and 88,000 jobs. The Cincinnati Innovation District® is Greater Cincinnati's newest, premier development and economic opportunity. And it's happening right now!

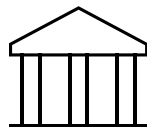
**GREATER CINCINNATI'S HUB FOR INNOVATION AND TALENT.**



**800 plus businesses** located in the surrounding area



**88,000 employees** within the Cincinnati Innovation District



**5 anchor institutions** locate within the district



**100+ properties** acquired for development



**\$25M invested** in property acquisitions

**2830 VICTORY PARKWAY**  
CINCINNATI, OH



**2830 VICTORY PARKWAY**  
CINCINNATI, OH



## CONTACT US

**TRAVIS LIKES**  
First Vice President  
travis.likes@cbre.com  
513 404 0987

**HANNAH STAUBACH**  
Associate  
hannah.staubach@cbre.com  
513 827 5113

# CBRE

© 2024 CBRE, Inc. All rights reserved. This information has been obtained from sources believed reliable, but has not been verified for accuracy or completeness. You should conduct a careful, independent investigation of the property and verify all information. Any reliance on this information is solely at your own risk. CBRE and the CBRE logo are service marks of CBRE, Inc. All other marks displayed on this document are the property of their respective owners, and the use of such logos does not imply any affiliation with or endorsement of CBRE. Photos herein are the property of their respective owners. Use of these images without the express written consent of the owner is prohibited. PMStudio\_October2019