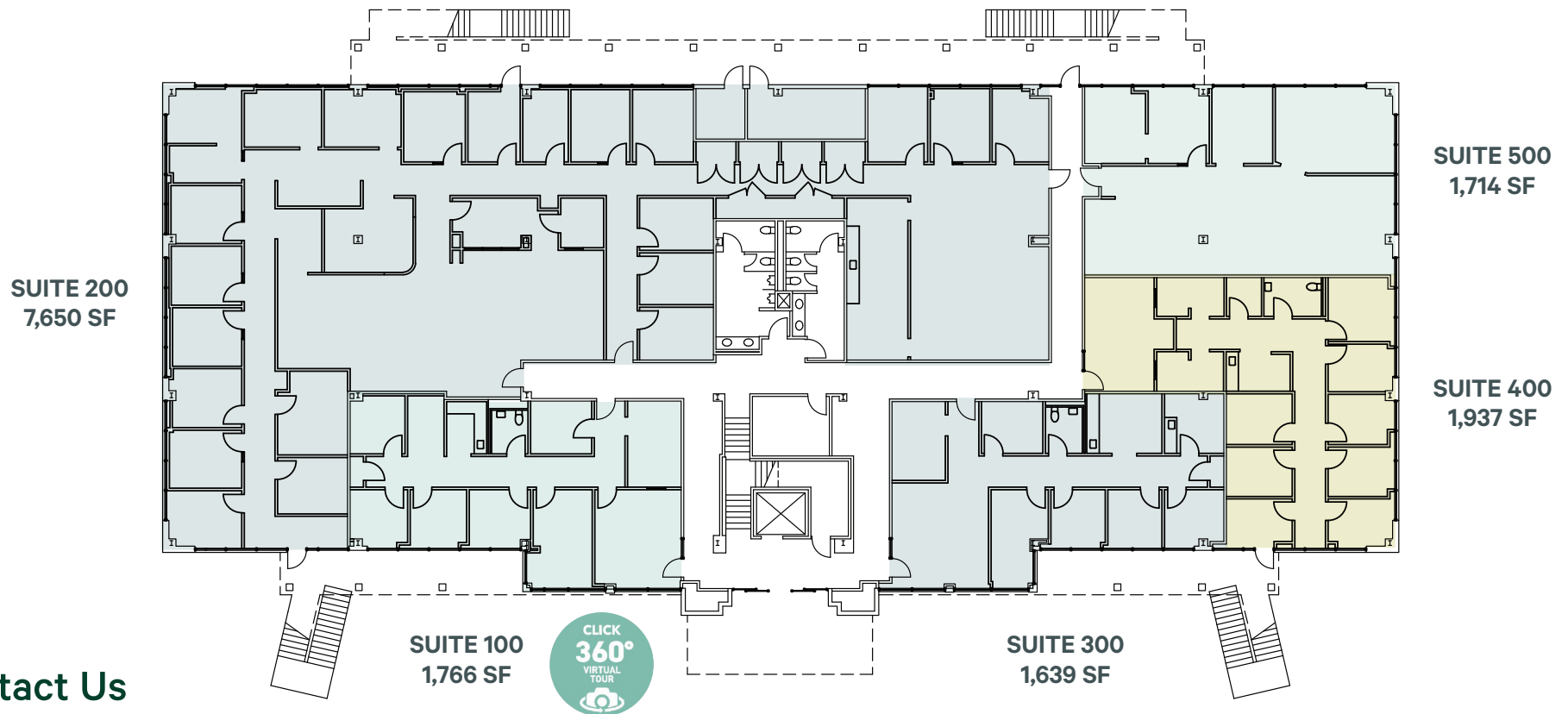


# NCCMC - Lakewood Crossing

22485 Tomball Pkwy  
Tomball, TX 77377  
[www.cbre.com/properties](http://www.cbre.com/properties)

1st Floor Availabilities - 14,706 SF



## Contact Us

**Angela Barber**  
Vice President  
+1 832 455 6945  
[angela.barber@cbre.com](mailto:angela.barber@cbre.com)

**Brandy Bellow Spinks**  
Executive Vice President  
+1 713 726 6100  
[brandy.bellow@cbre.com](mailto:brandy.bellow@cbre.com)

**Pamela Sprouse**  
Vice President  
+1 832 335 0277  
[pamela.sprouse@cbre.com](mailto:pamela.sprouse@cbre.com)

**Danielle Parsons**  
Associate  
+1 8713 907 8905  
[danielle.parsons@cbre.com](mailto:danielle.parsons@cbre.com)