

719 2ND AVENUE SEATTLE, WA 98104

Millennium Tower

Plug & Play Sublease

14,692 RSF



Property Features



Great natural light and water views of Elliott Bay



High-end kitchen and community area



Building shower facilities with lockers



Parking: 1.0/1,000 SF



Convenient access to I-5



3-minute walk to Pioneer Square Link Light Rail Stations



7 blocks from the Seattle Ferry Terminal



Mix of open workspaces, private offices, and conference room



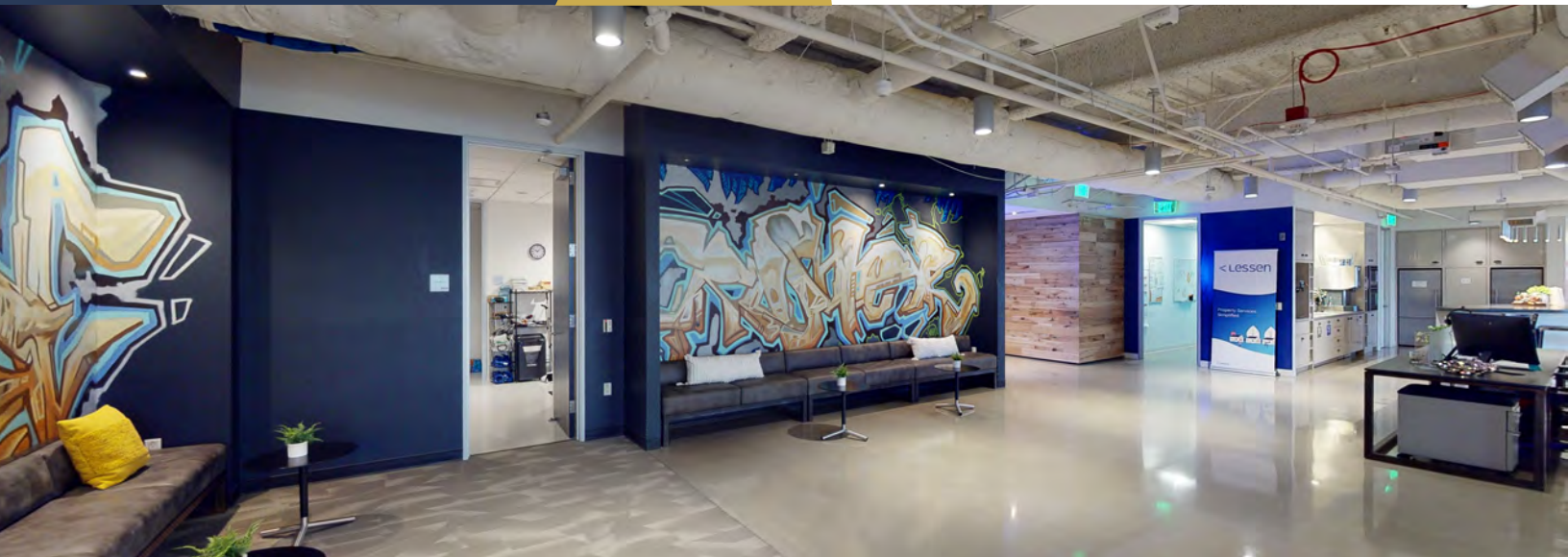
Full floor with secure elevator access



Floor 9 14,692 SF

Plug and Play Sublease
(not divisible)

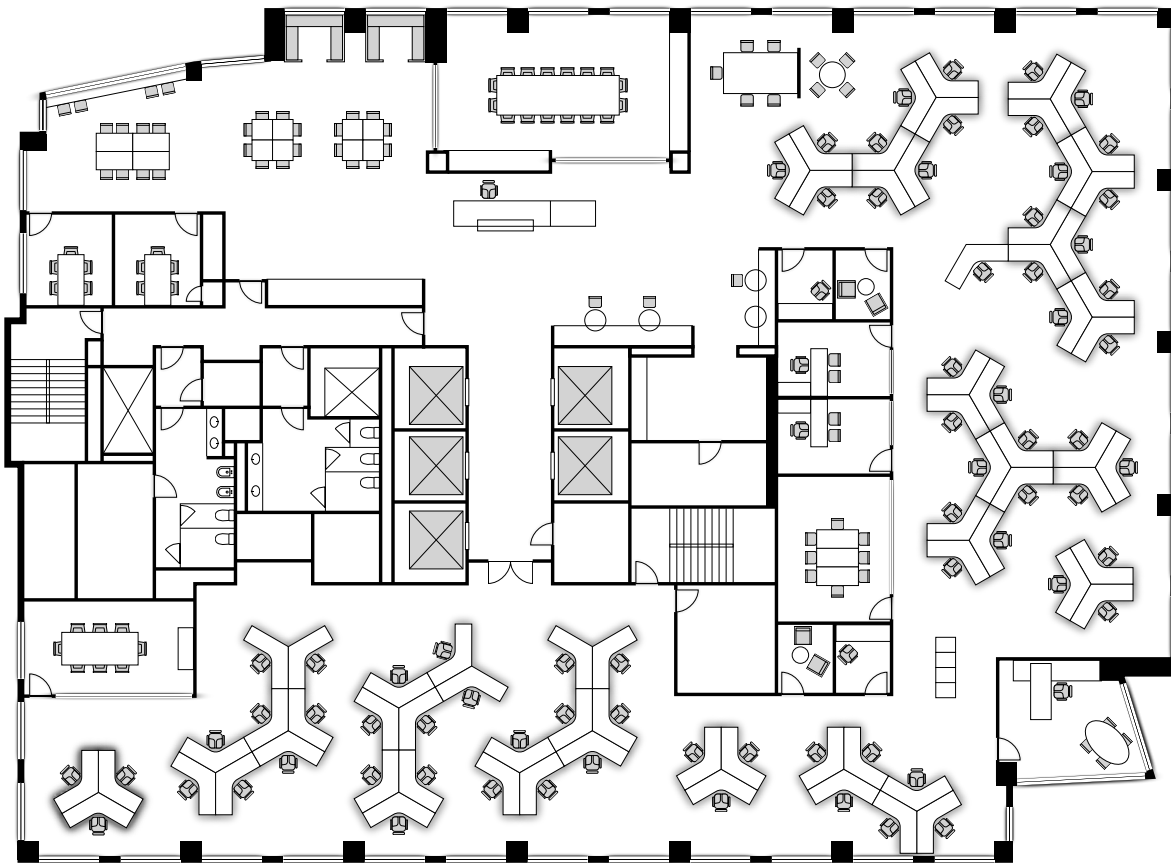
Sublease term through
October 31, 2025





Floor 9

14,692 SF



719 2ND AVENUE SEATTLE, WA 98104

Millennium Tower



Dan Marconi

Senior Associate

T +1 206 292 6172

dan.marconi@cbre.com

CBRE

© 2022 CBRE, Inc. All rights reserved. This information has been obtained from sources believed reliable, but has not been verified for accuracy or completeness. You should conduct a careful, independent investigation of the property and verify all information. Any reliance on this information is solely at your own risk. CBRE and the CBRE logo are service marks of CBRE, Inc. All other marks displayed on this document are the property of their respective owners, and the use of such logos does not imply any affiliation with or endorsement of CBRE. Photos herein are the property of their respective owners. Use of these images without the express written consent of the owner is prohibited. PMStudio_March2023