

The Corbin Collection

1417-1445 New Britain Avenue | West Hartford, Connecticut

25,900 SF Available - Retail Space



Property Description

CBRE is pleased to exclusively offer for lease approximately 25,900 SF of prime retail space (currently occupied by Saks Off 5th) on the ground floor at The Corbin Collection. This property is located in the coveted, affluent trade area of West Hartford, CT. Co-tenants include Shake Shack, REI, Level 99 (coming soon!), Club Pilates, Crumbl Cookies, Fly-O-Land, Tavern in the Square, Ivy Rehab, Olive Garden, Go Health and Poke Works! Prominent signage is available on the building and pylon signs at the two main entrances. The Corbin Collection is conveniently located at 1445 New Britain Avenue immediately off Interstate 84 at Exit 40 and Route 9 and directly across from Westfarms Mall. Westfarms Mall is known for being a top retail sales performer, consistently ranking #1 among malls in Connecticut and the top 1% in New England.



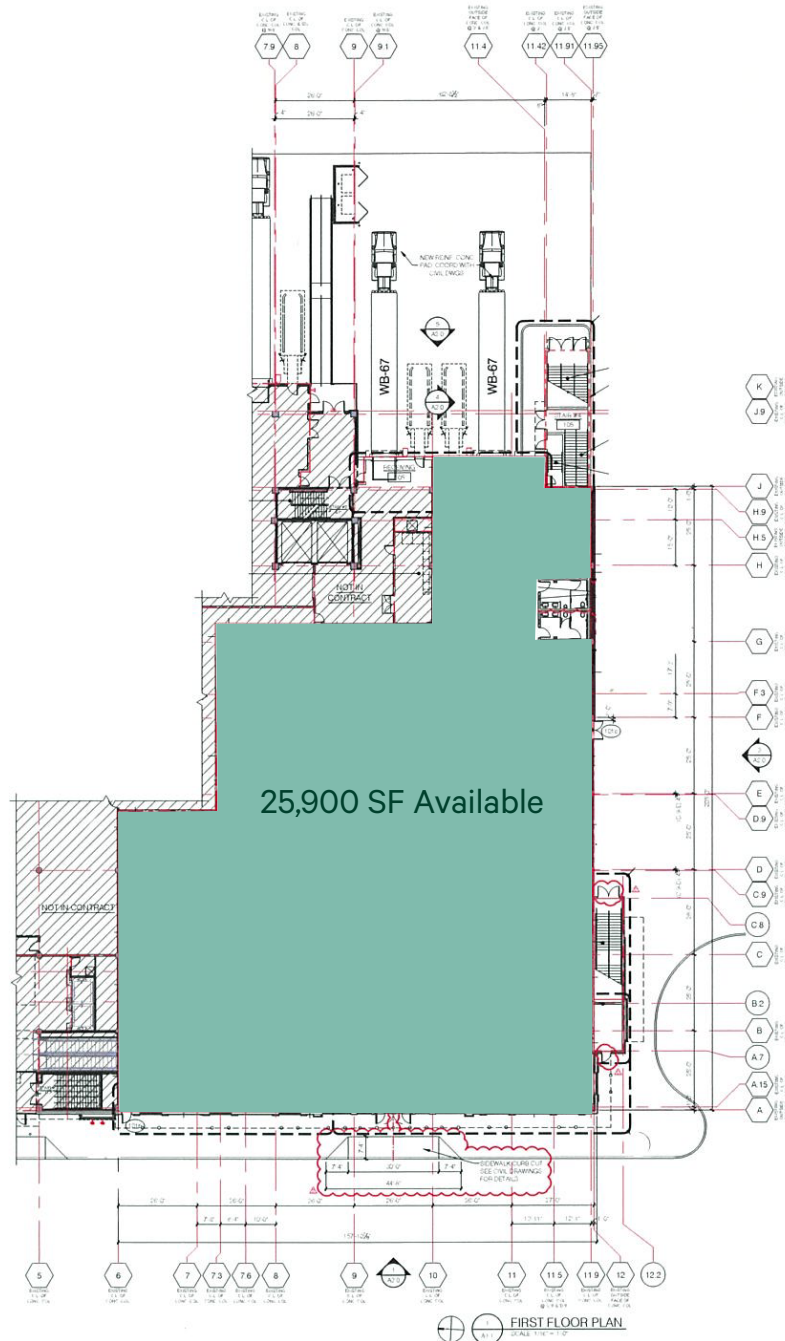
Demographics

| Estimated | 1 mile | 3 miles | 5 miles | 10 miles |
|--------------------------|-----------|-----------|-----------|-----------|
| Population | 7,931 | 76,415 | 266,383 | 612,609 |
| Households | 2,955 | 30,847 | 108,090 | 159,475 |
| Average Household Income | \$148,888 | \$138,661 | \$110,291 | \$119,429 |
| Median Age | 50.9 | 48.9 | 37.2 | 37.3 |

Floor Plan

First Floor (Ground Floor)

25,900 SF Available



The Corbin Collection

1417-1445 New Britain Avenue | West Hartford, CT 06110

For Lease



Contact Us

Alexis Augsberger

First Vice President

+1 860 987 4708

alexis.augsberger@cbre.com

CBRE, Inc.

+1 860 525 9171

© 2025 CBRE, Inc. All rights reserved. This information has been obtained from sources believed reliable but has not been verified for accuracy or completeness. CBRE, Inc. makes no guarantee, representation or warranty and accepts no responsibility or liability as to the accuracy, completeness, or reliability of the information contained herein. You should conduct a careful, independent investigation of the property and verify all information. Any reliance on this information is solely at your own risk. CBRE and the CBRE logo are service marks of CBRE, Inc. All other marks displayed on this document are the property of their respective owners, and the use of such marks does not imply any affiliation with or endorsement of CBRE. Photos herein are the property of their respective owners. Use of these images without the express written consent of the owner is prohibited.

cbre.us/hartford

