

Office | For Sublease

CBRE

Mopac Centre

Suite 475- 5,412 RSF

8611 N Mopac Expressway
Austin, TX 78756
www.cbre.com

Rate: \$25.00 | OPEX \$18.91 | Thru 7/31/2028



Mopac Centre

8611 N Mopac Expressway | Austin, TX 78756

For Sublease



Property Details

+ **Suite 475:** 5,412 RSF

+ **Lease X:** 7/31/2028

+ **Rate:** \$25.00 NNN

+ **Parking:** 5/1000

+ **OPEX:** \$18.21

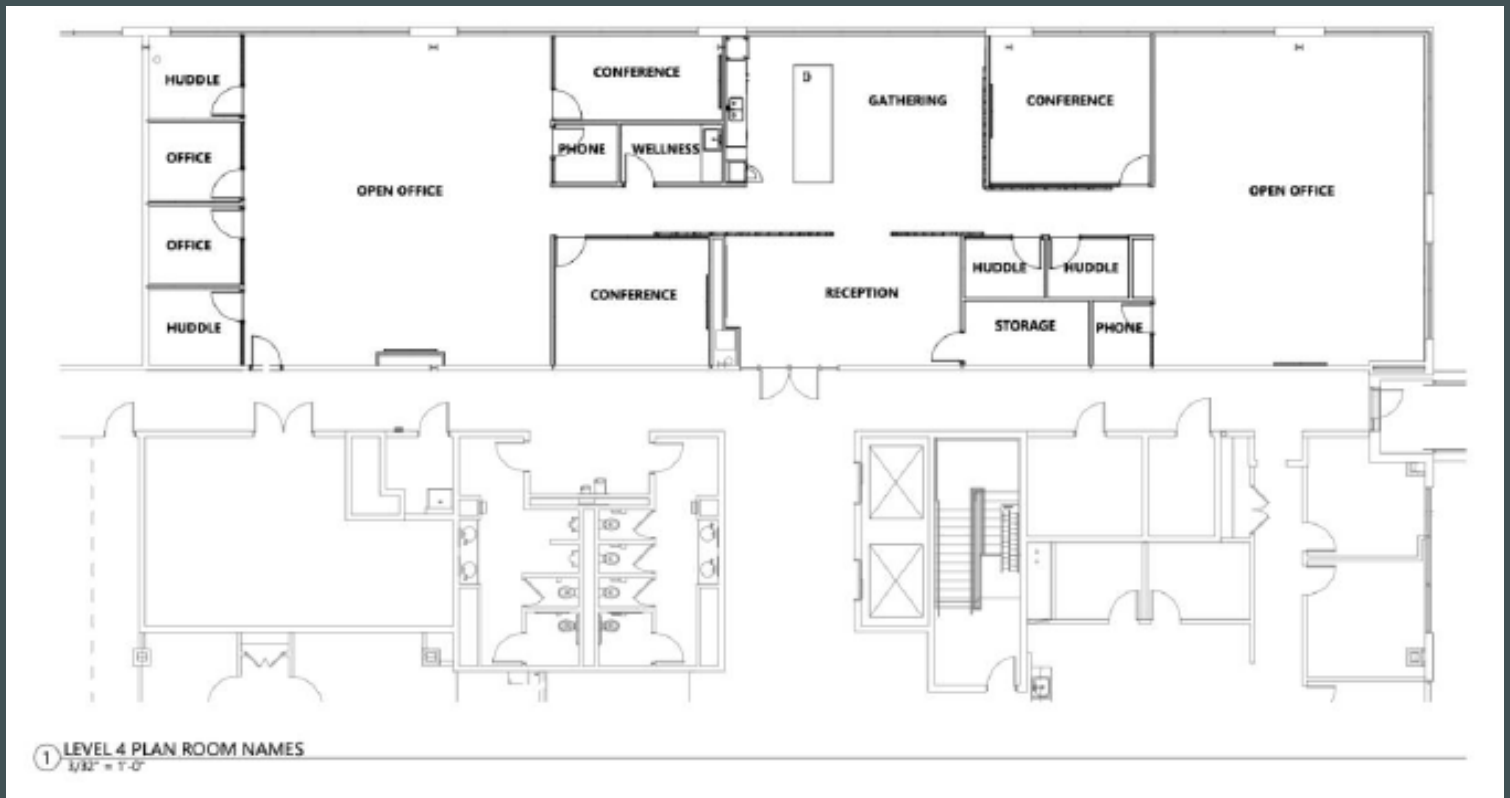
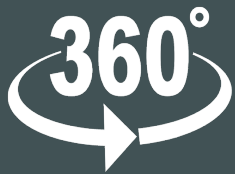
Building Details

- + Close proximity to nearby amenities
- **Shops at Arbor Walk:** 2-minute drive
- **The Domain:** 7-minute drive
- **Q2 Stadium:** 5-minute drive
- + Structured parking
- + Easy access from Mopac Expy

Space Details

- + Class A modern finishes
- + Open configuration
- + Furniture available
- + Private Conference Rooms
- + Spacious Kitchen & Dining
- + High Ceilings & Natural Light

[Click here for virtual tour](#)



Contact Us

Kelly Woodruff

Senior Vice President

+1 512 499 4927

kelly.woodruff@cbre.com

© 2021 CBRE, Inc. All rights reserved. This information has been obtained from sources believed reliable, but has not been verified for accuracy or completeness. You should conduct a careful, independent investigation of the property and verify all information. Any reliance on this information is solely at your own risk. CBRE and the CBRE logo are service marks of CBRE, Inc. All other marks displayed on this document are the property of their respective owners, and the use of such logos does not imply any affiliation with or endorsement of CBRE. Photos herein are the property of their respective owners. Use of these images without the express written consent of the owner is prohibited.