

Office/Warehouse | For Lease

CBRE

Big Thompson Industrial Park

42,000 SF Available

619 14th St. SW
Loveland, CO 80537
www.cbre.com/61914thSt.SW



POSSIBLE USES

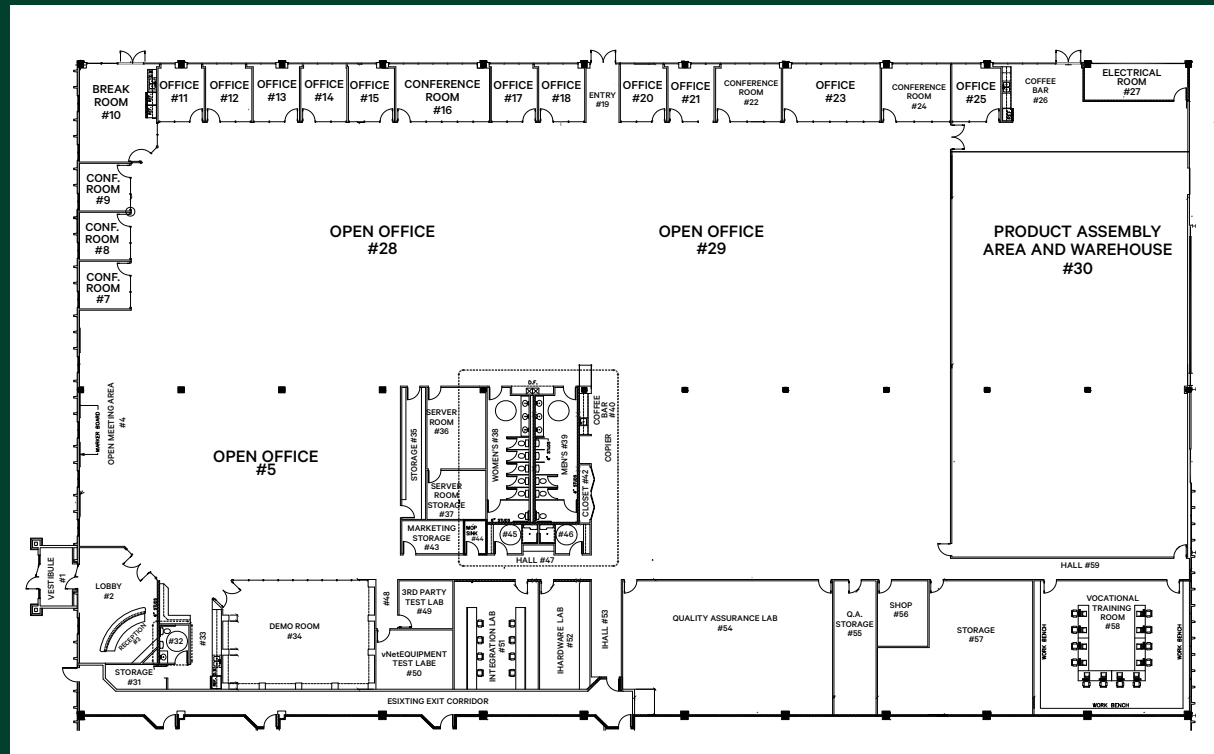
- Light Manufacturing
- R & D
- Life Sciences
- Warehousing

Property Overview

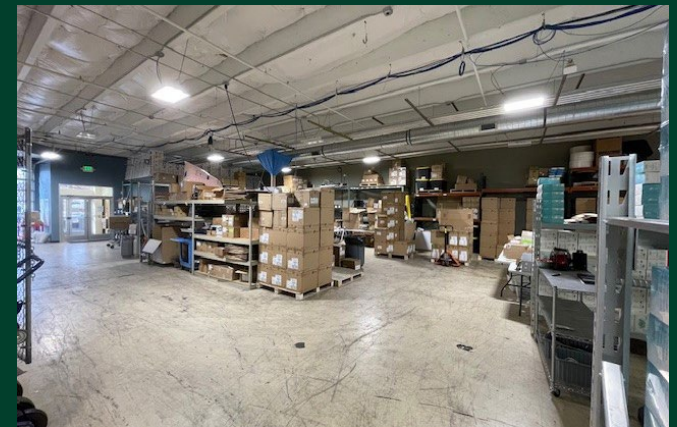
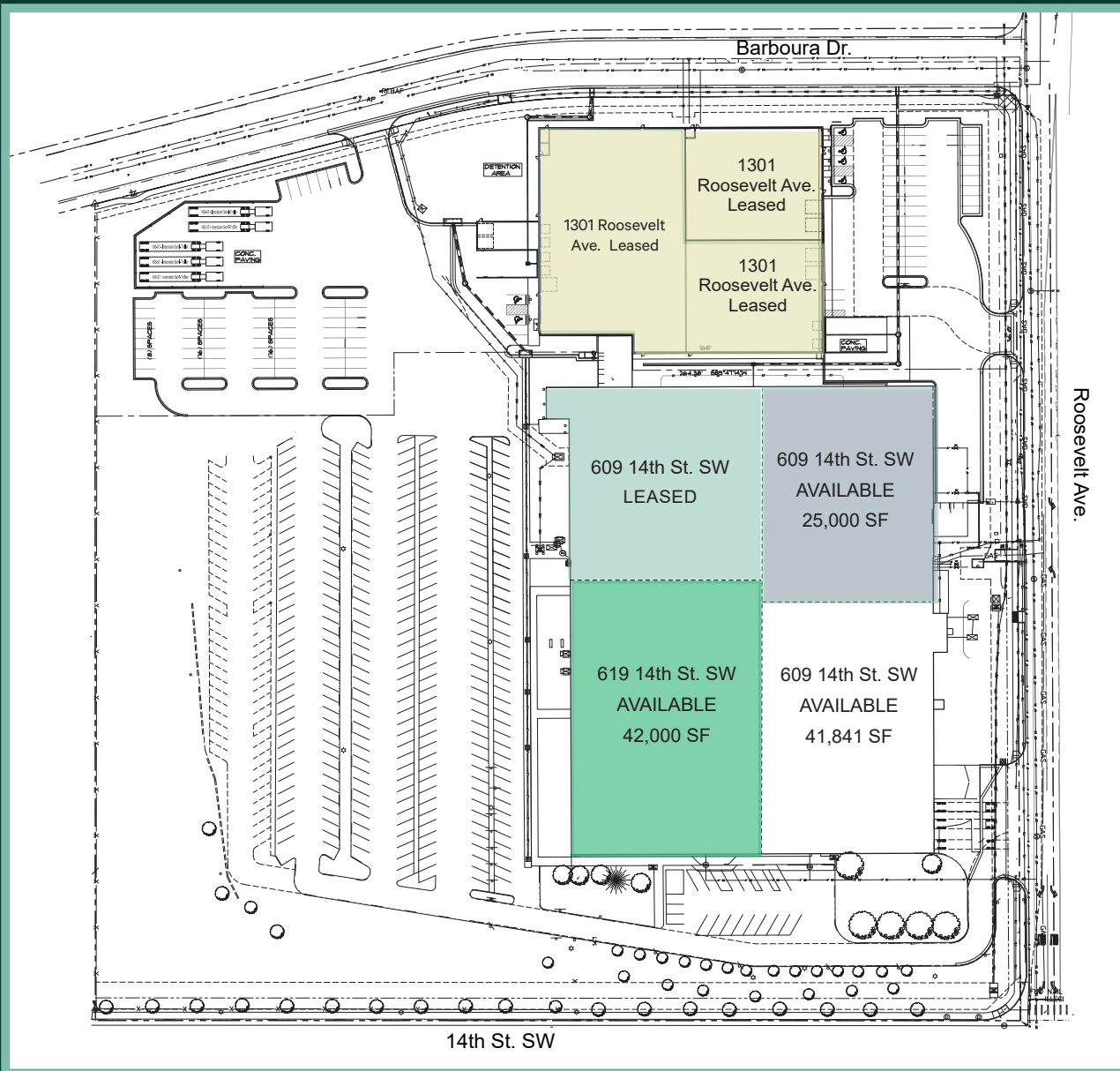
LOCATION:	Big Thompson Industrial Park
AVAILABLE SPACE:	42,000 SF
LEASE RATE:	\$12.50/SF NNN
EST NNN EXPENSE:	\$3.30/SF
SPRINKLERS:	ESFR
POWER:	2,000 amps / 480v / 3 Phase
CEILING HEIGHT:	14'
LAND:	10.16 acres
PARKING:	2.18:1,000/sf

Highlights

- + Part of the Sitestone Campus
- + Minutes from Downtown Loveland
- + Open office area with private offices and conference room along the perimeter
- + 3" Water Tap
- + Redundant power from two separate generators.

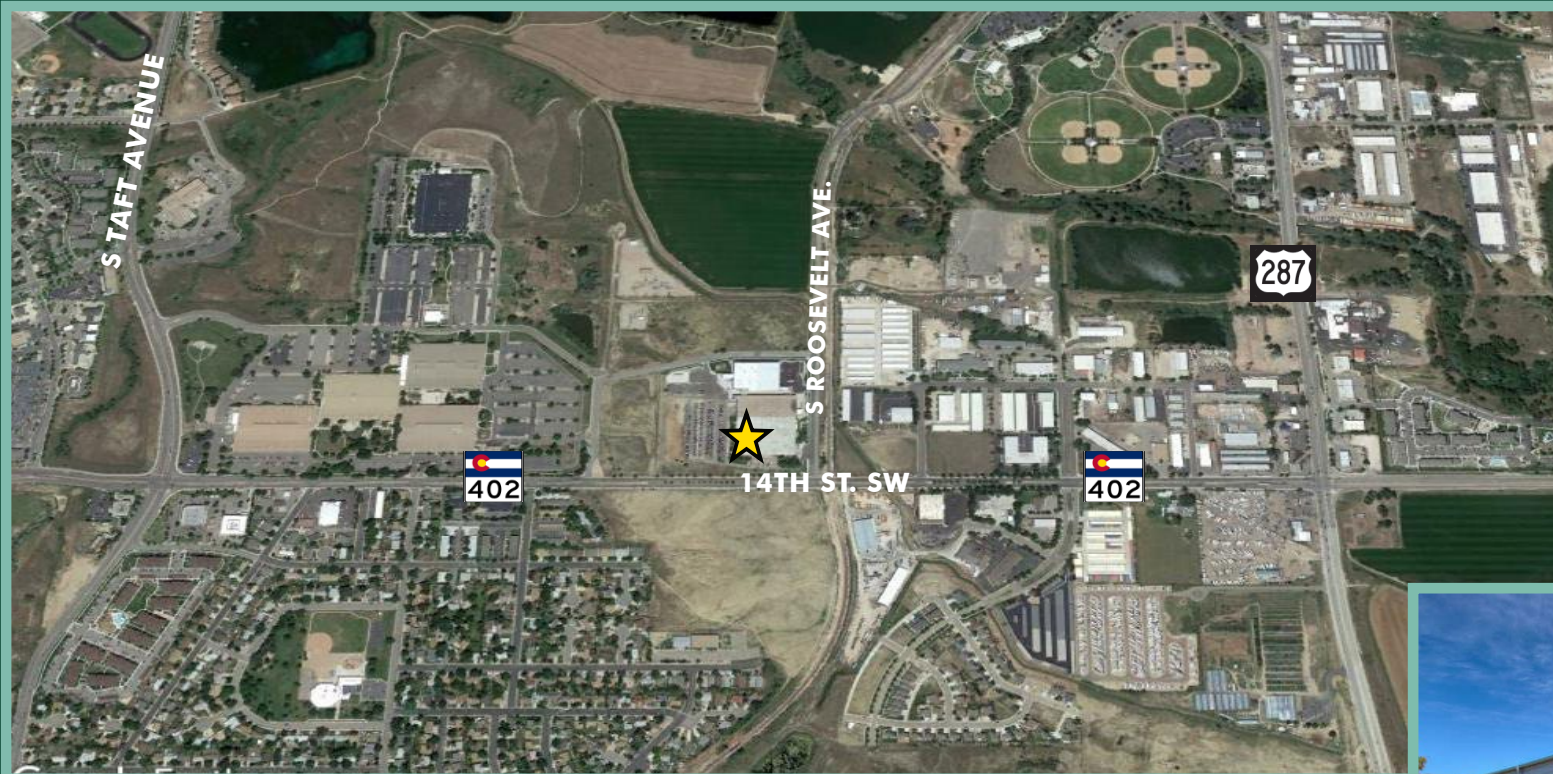


Site Plan



Big Thompson Industrial Park
619 14th Street SW | Loveland, CO 80537

For Sale or Lease



Contact Us

MIKE EYER

First Vice President
+1 970 372 3844
mike.eyer@cbre.com

JULIUS TABERT

First Vice President
+1 970 372 3852
julius.tabert@cbre.com

© 2024 CBRE, Inc. All rights reserved. This information has been obtained from sources believed reliable, but has not been verified for accuracy or completeness. You should conduct a careful, independent investigation of the property and verify all information. Any reliance on this information is solely at your own risk. CBRE and the CBRE logo are service marks of CBRE, Inc. All other marks displayed on this document are the property of their respective owners, and the use of such logos does not imply any affiliation with or endorsement of CBRE. Photos herein are the property of their respective owners. Use of these images without the express written consent of the owner is prohibited.

www.cbre.com/colorado

CBRE