



FOR SALE
INVESTMENT PROPERTY
SALE PRICE: \$ 8 9 5 , 0 0 0

MIDWEST CITY OFFICE PROPERTY

1338-1342 S. Douglas Blvd, Midwest City OK 73130



BUILDING DETAILS

This building is located in a thriving mature neighborhood mix of banks, restaurants, retail, residential and medical office and provides quick access to Tinker Air Force Base

- Building Size:
 - 1338 S Douglas - ±2,674 RSF
 - 1342 S Douglas - ±9,831 RSF
- Lot Size: ±1.2 Acres
- Rare combination of medical and general office with separate entrances and abundant parking
- Cross parking and access on South Douglas
- Old Republic Title occupies 25% of the office complex.
- Stable income with potential for owner/occupant in the vacancies.
- Built in 1981 & 1986



PLEASE CONTACT:

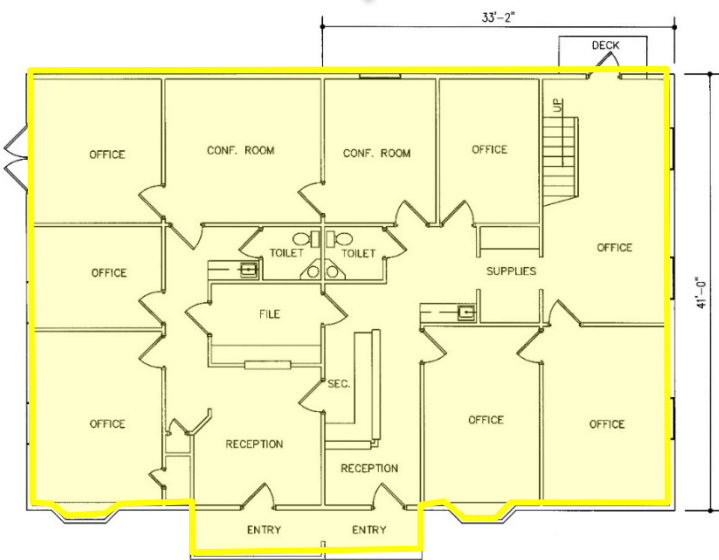
AMY DUNN, CCIM

+1 405 607 6021

amy.dunn@cbre.com

© 2020 CBRE, Inc. All rights reserved. This information has been obtained from sources believed reliable, but has not been verified for accuracy or completeness. You should conduct a careful, independent investigation of the property and verify all information. Any reliance on this information is solely at your own risk. CBRE and the CBRE logo are service marks of CBRE, Inc. All other marks displayed on this document are the property of their respective owners, and the use of such logos does not imply any affiliation with or endorsement of CBRE. Photos herein are the property of their respective owners. Use of these images without the express written consent of the owner is prohibited.

Old Republic Title
2,674 RSF



1338 S Douglas Blvd



Executive Suite
Suites 201-304
1,992 RSF

Available
Suite 200
682 RSF

Suite A - OK Foot &
Ankle Assoc.
2,020 RSF

Suite C - Metro Pins
2,217 RSF

Suite B - Timberview
Dentistry
1,720 RSF

1342 S Douglas Blvd

