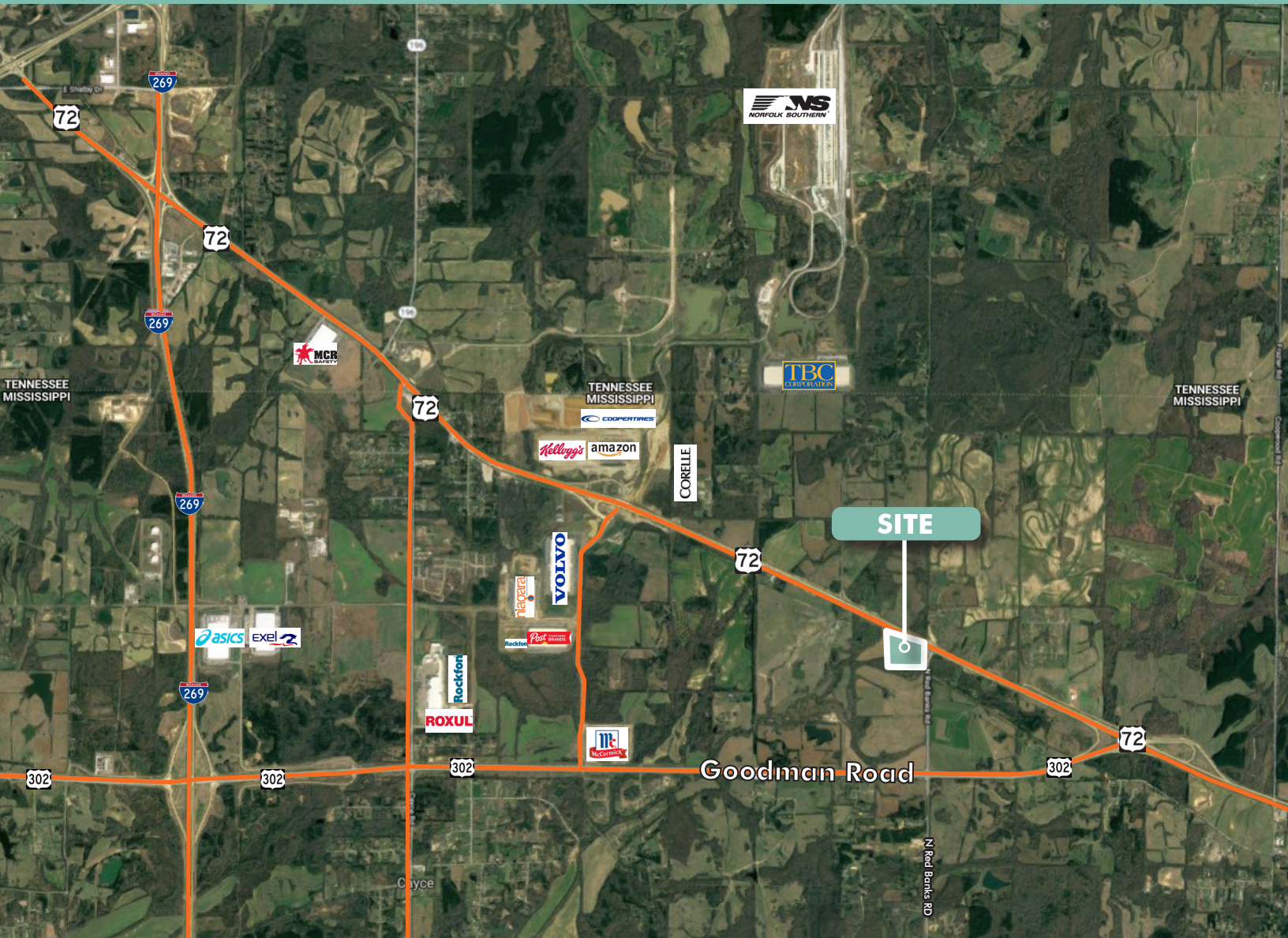


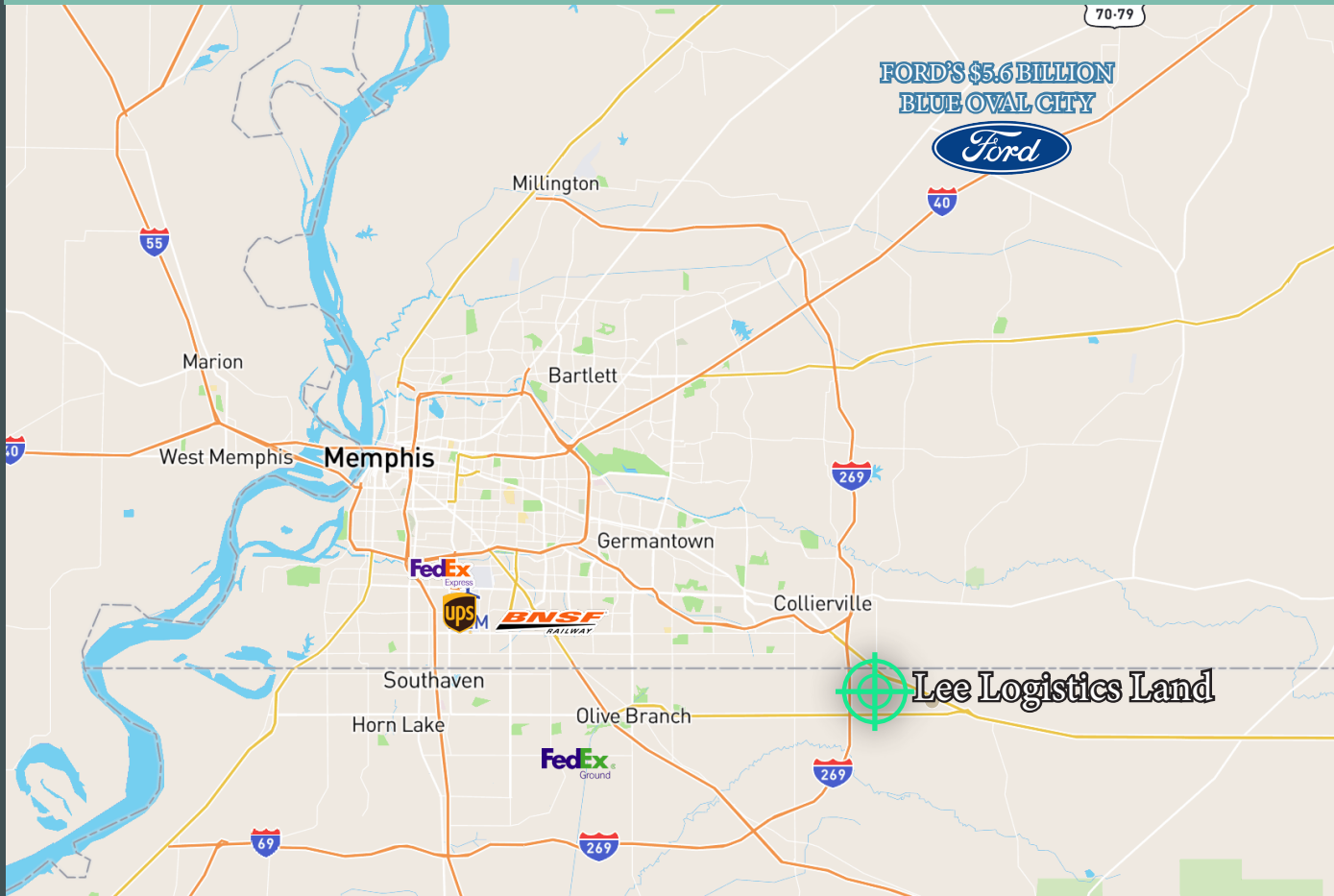
# Lee Logistics Retail Land Site

0 HWY 72  
Byhalia, MS 38611  
[www.cbre.com/memphis](http://www.cbre.com/memphis)

±7.68 ACRES | MARSHALL COUNTY, MS



43 minutes/43 miles from  
FORD'S \$5.6 BILLION | BLUE OVAL CITY

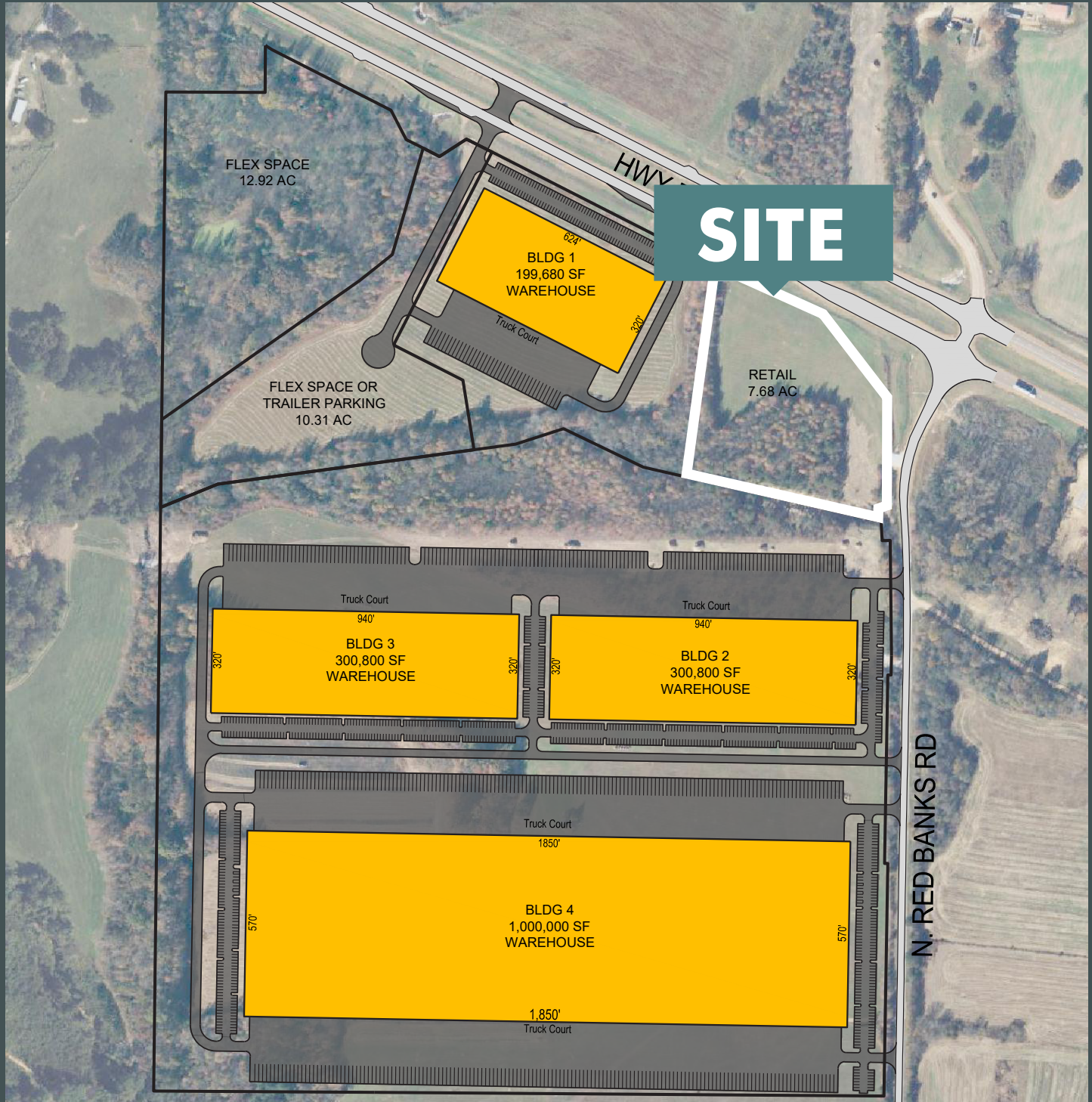


## GREAT LOCATION!!!

CBRE presents ±7.68 acres in the growing Marshall County Industrial Submarket. The property has prime Hwy 72 frontage with the potential for retail commercial use. Over 12 million square feet of industrial development has delivered near the site in the last 12 years becoming the most active industrial submarket in the Metro Area.

The site has quick access to I-269, I-22, TN State Routes 385, 57 and Highway 72 as well as MS State Highway 302, all which provide direct access to I-40 and I-55. Our site sits just south of Norfolk Southern Intermodal, a facility representing a \$105 million investment with 750,000 lifts per year capacity. As Norfolk Southern's western most intermodal facility this facility is a strategic piece in Norfolk Southern's new "Crescent Corridor".





## Contact Us

**Patrick Walton, SIOR**  
Senior Vice President  
+1 901 260 1830  
patrick.walton@cbre.com

**Stephanie Allen**  
Associate  
+1 901 260 1051  
stephanie.allen@cbre.com

© 2024 CBRE, Inc. All rights reserved. This information has been obtained from sources believed reliable, but has not been verified for accuracy or completeness. You should conduct a careful, independent investigation of the property and verify all information. Any reliance on this information is solely at your own risk. CBRE and the CBRE logo are service marks of CBRE, Inc. All other marks displayed on this document are the property of their respective owners, and the use of such logos does not imply any affiliation with or endorsement of CBRE. Photos herein are the property of their respective owners. Use of these images without the express written consent of the owner is prohibited.