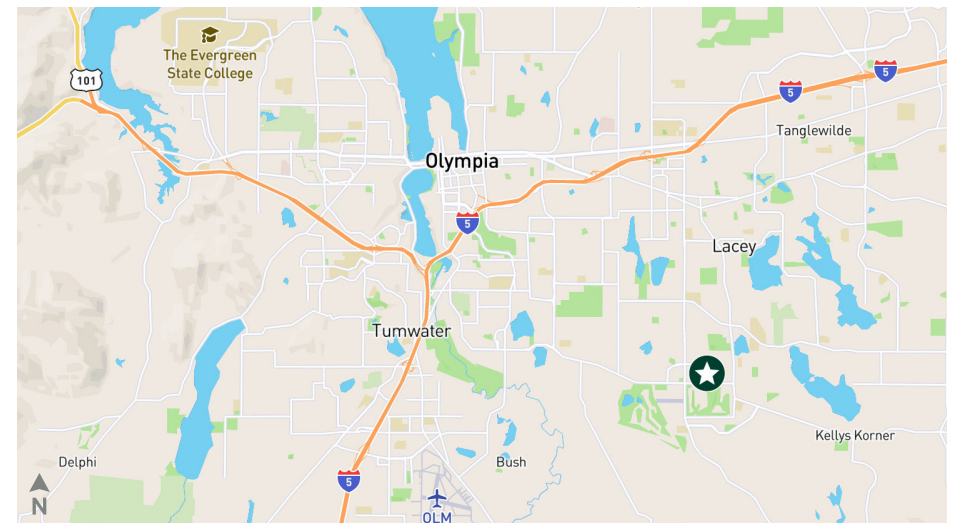


# Lacey Vacant Land

5100 Parkside Drive SE  
Lacey, WA 98503  
[www.cbre.com/tacoma](http://www.cbre.com/tacoma)

## \*Price Reduction

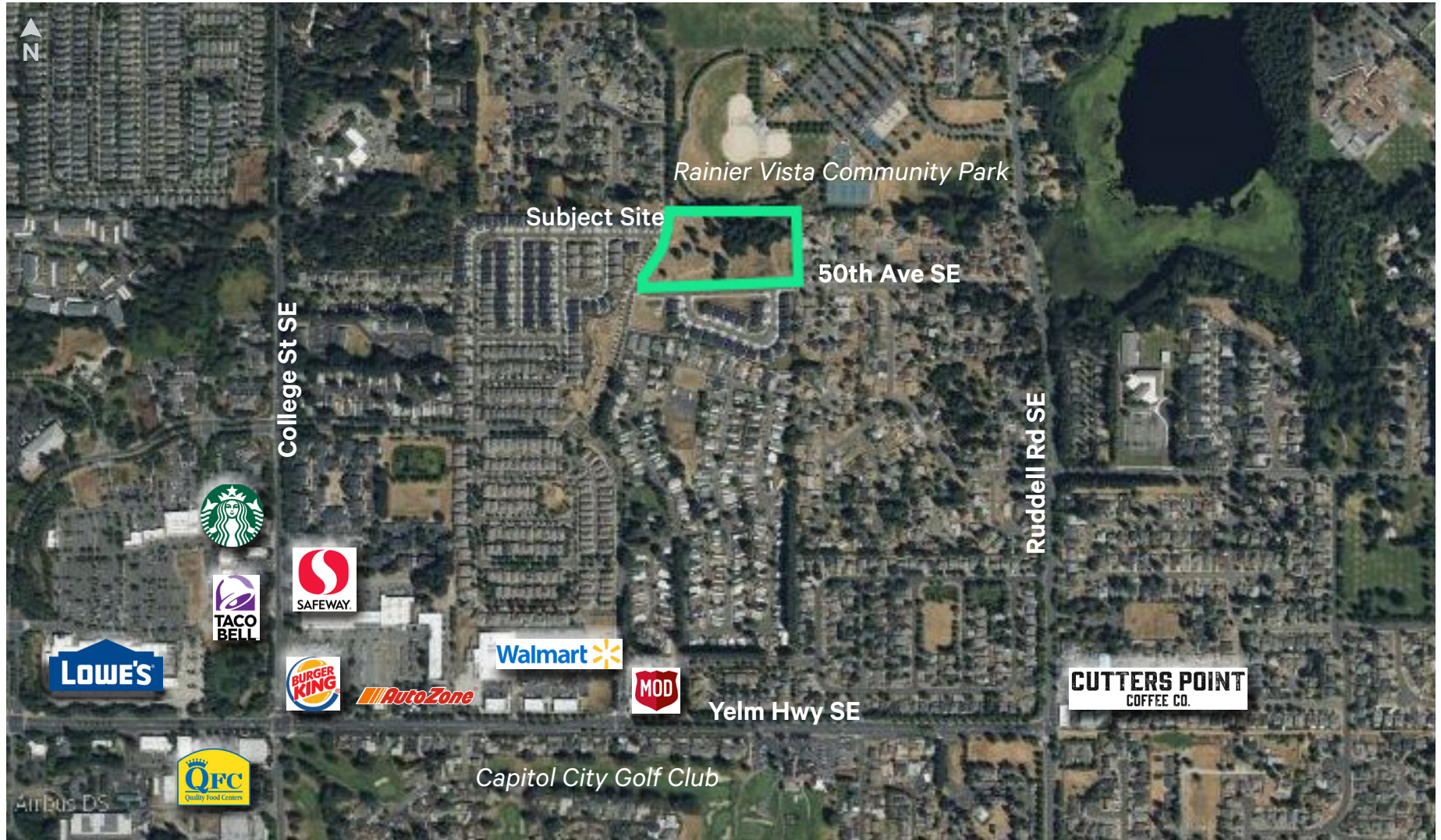
- + \*Sales Price: \$1,845,000
- + Parcel #: 11833310800
- + Size: ±5.83 acres
- + Zoning: OSI - Open Space Institutional
- + Municipality: City of Lacey
- + Utilities: Sewer, water, electric in street
- + I-5 less than 4 miles away, 6 miles to Olympia Airport, adjacent to park



## Contact Us

**Teresa Patton**  
First Vice President  
+1 253 596 0043  
[teresa.patton@cbre.com](mailto:teresa.patton@cbre.com)

**CBRE, Inc.**  
1201 Pacific Avenue  
Suite #1502  
Tacoma, WA 98402



© 2024 CBRE, Inc. All rights reserved. This information has been obtained from sources believed reliable, but has not been verified for accuracy or completeness. You should conduct a careful, independent investigation of the property and verify all information. Any reliance on this information is solely at your own risk. CBRE and the CBRE logo are service marks of CBRE, Inc. All other marks displayed on this document are the property of their respective owners, and the use of such logos does not imply any affiliation with or endorsement of CBRE. Photos herein are the property of their respective owners. Use of these images without the express written consent of the owner is prohibited.SD 7.8.24