

6301 Glenwood Street Overland Park, KS

31,493± RSF Available on 3rd Floor

16,825± RSF Available on 1st Floor

www.cbre.com/theglen



Property Highlights

- + 31,493± RSF Available on the 3rd Floor
- + 16,825± RSF Available on the 1st Floor
 - Suite 1A - 2,209± RSF
 - Suite 1B - 7,793± RSF
 - Suite 1D - 6,823± RSF
- + Sublease rate: \$17.00/RSF Full Service Gross
- + Sublease term expires: March 31, 2026
- + 1st Floor on site food service
- + Furniture available
- + Large efficient floor plates
- + Parking ratio: 4.6/1,000 RSF
- + Covered parking
- + Outdoor patio with views of manicured pond
- + Constructed in 2000

For Sublease

6301 Glenwood Street | Overland Park, KS



Amenities within
1 Mile of
6301 Glenwood Street

30+

Restaurants

3

Fitness Centers

1450

Apartment Units
Existing & Under Construction

77

Hotel Rooms

For Sublease

6301 Glenwood Street | Overland Park, KS

1st Floor - 16,825± RSF

Suite 1A
2,209± RSF



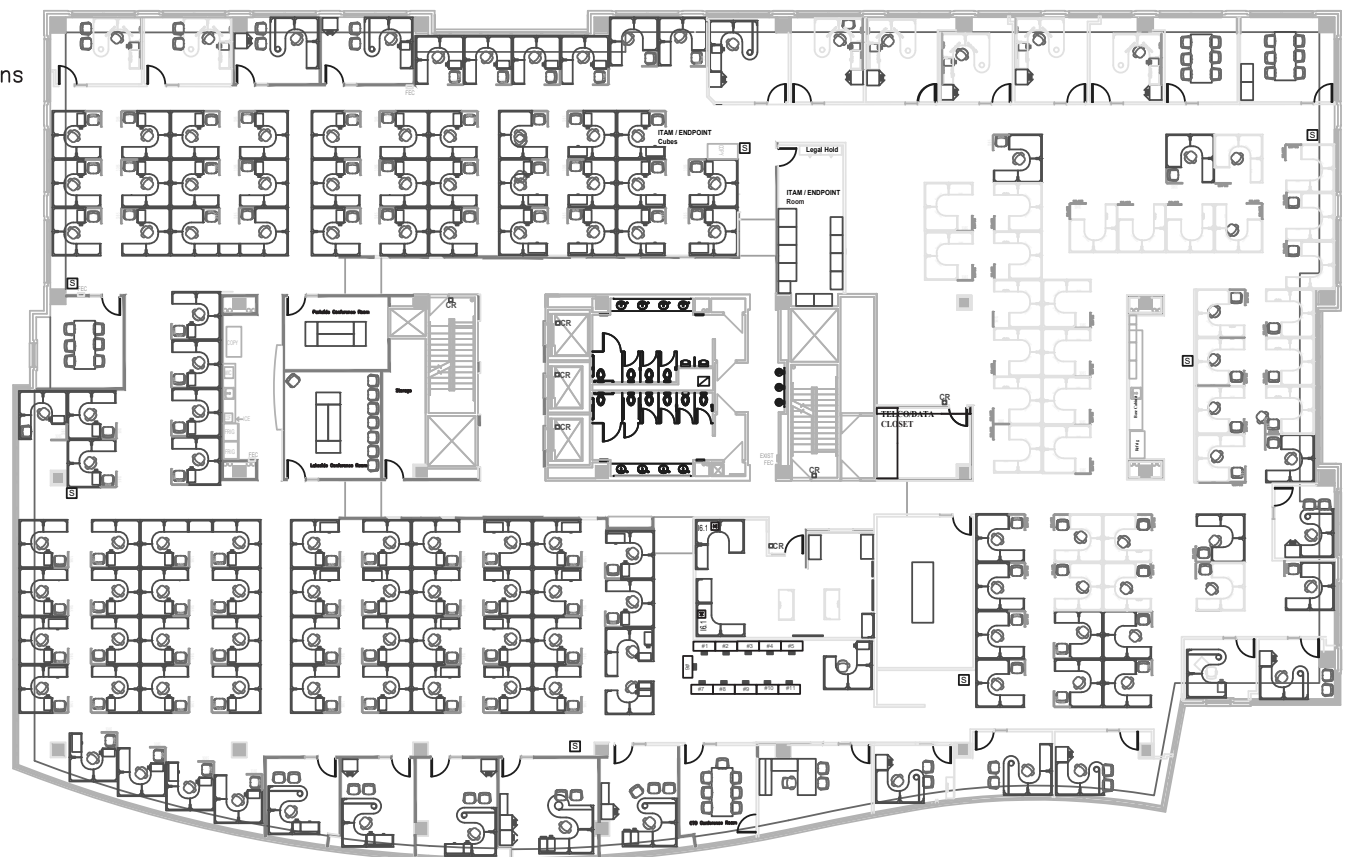
Suite 1B
8,379± RSF

Suite 1D
6,823± RSF

Suite 1C
6,534± RSF
Subleased through March 2026

3rd Floor - 31,493± RSF

Offices
22
Workstations
134

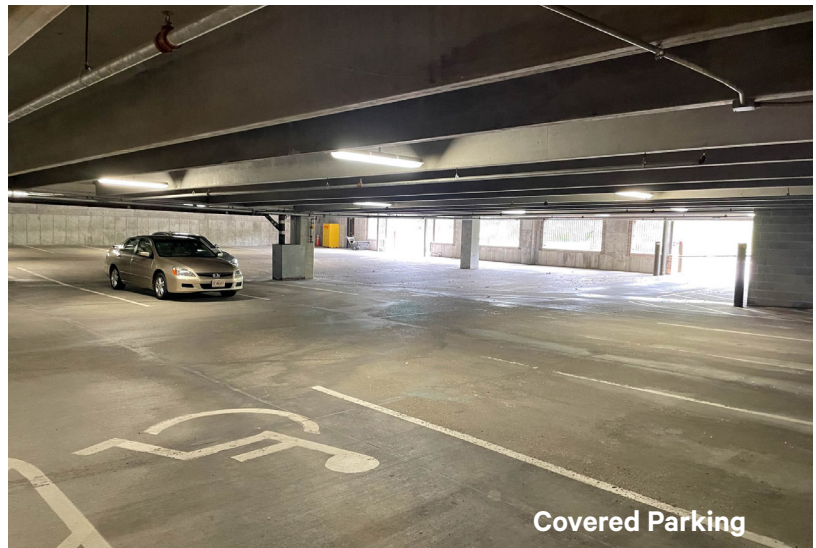




Water Feature



Outdoor Tenant Area



Covered Parking

Contact Us

Bob Fagan, CCIM
Senior Vice President
+1 816 968 5821
bob.fagan@cbre.com

Matt Eckert
Senior Vice President
+1 816 968 5837
matt.eckert@cbre.com

© 2023 CBRE, Inc. All rights reserved. This information has been obtained from sources believed reliable, but has not been verified for accuracy or completeness. You should conduct a careful, independent investigation of the property and verify all information. Any reliance on this information is solely at your own risk. CBRE and the CBRE logo are service marks of CBRE, Inc. All other marks displayed on this document are the property of their respective owners, and the use of such logos does not imply any affiliation with or endorsement of CBRE. Photos herein are the property of their respective owners. Use of these images without the express written consent of the owner is prohibited.