

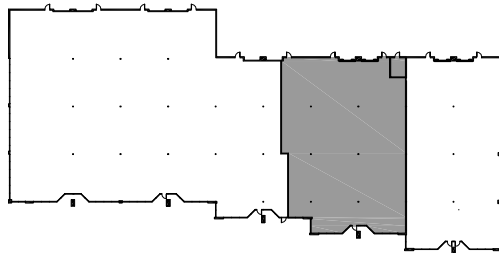
# Park Central Business Park

3870 Park Central Blvd,  
Pompano Beach, FL 33064

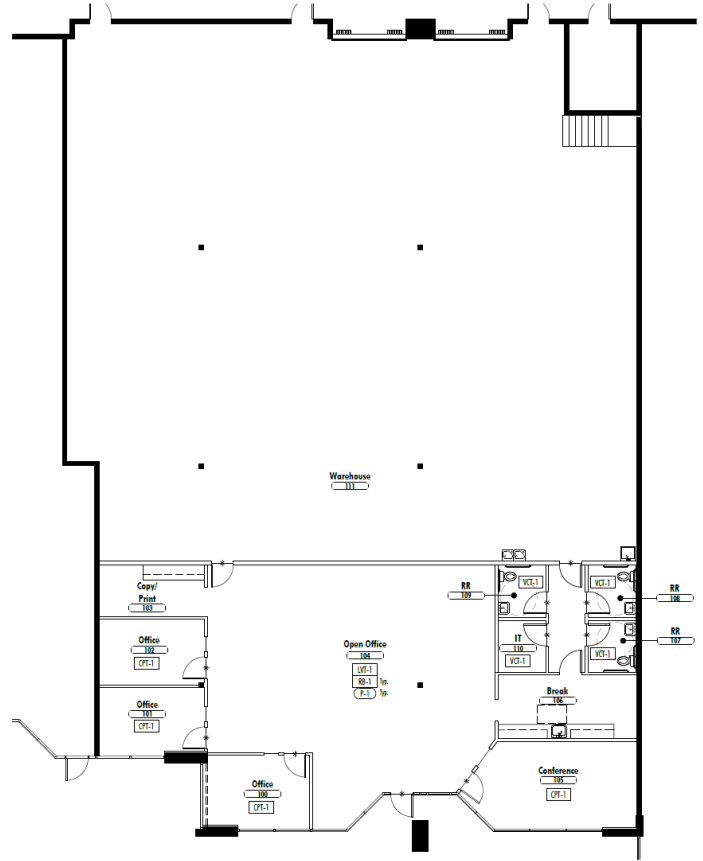


# Property Features

- + ±8,303 SF available
- + ±2,287 SF office
- + 100% HVAC
- + 1 dock door, 1 ramp
- + Built in 1985
- + Up to 16' clear height
- + Drive in loading
- + Brand new office and warehouse lights
- + Glass store fronts
- + ±3.47 : 1,000 parking ratio



KEY PLAN



## Contact Us

### Tom O'Loughlin

Executive Vice President  
 +1 954 817 3919  
 tom.oloughlin@cbre.com

### Larry Genet

Executive Vice President  
 +1 305 807 0004  
 larry.genet@cbre.com

### Michael Oretsky

Senior Associate  
 +1 954 798 4284  
 michael.oretzky@cbre.com

© 2021 CBRE, Inc. All rights reserved. This information has been obtained from sources believed reliable, but has not been verified for accuracy or completeness. You should conduct a careful, independent investigation of the property and verify all information. Any reliance on this information is solely at your own risk. CBRE and the CBRE logo are service marks of CBRE, Inc. All other marks displayed on this document are the property of their respective owners, and the use of such logos does not imply any affiliation with or endorsement of CBRE. Photos herein are the property of their respective owners. Use of these images without the express written consent of the owner is prohibited.