

SUBLEASE AVAILABLE | WAREHOUSE DISTRICT

MOVE-IN READY OFFICE SPACE

5,042 SF



HOYT BLOCK BUILDING · 1304 WEST 6TH, SUITE 106 · CLEVELAND, OH 44113

ROBERT LEIBOLD
Vice President
+1 216 363 6449
robert.leibold@cbre.com

CBRE



PROPERTY HIGHLIGHTS

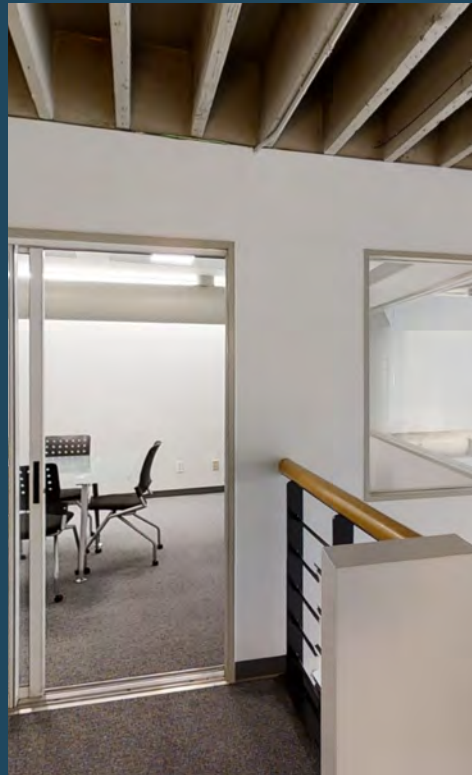
- 5,042 SF two-story loft office space (connected via internal stairwell)
- Mixture private offices, open workspaces and kitchenette
- Ground level entryway to Worthington Yards courtyard & West 6th
- Worthington Yards courtyard features Wi-Fi access to enjoy working outdoors
- Janitorial services included
- Steps from restaurants, bars, residential and other amenities
- Furniture negotiable
- Sublease ends January 31, 2025



**\$18.25 PSF
Asking Rate**



INTERIOR PHOTOS



© 2023 CBRE, Inc. All rights reserved. This information has been obtained from sources believed reliable, but has not been verified for accuracy or completeness. You should conduct a careful, independent investigation of the property and verify all information. Any reliance on this information is solely at your own risk. CBRE and the CBRE logo are service marks of CBRE, Inc. All other marks displayed on this document are the property of their respective owners, and the use of such logos does not imply any affiliation with or endorsement of CBRE. Photos herein are the property of their respective owners. Use of these images without the express written consent of the owner is prohibited. Licensed Real Estate Broker.



CONTACT US

ROBERT LEIBOLD
Vice President
+1 216 363 6449
robert.leibold@cbre.com

CBRE, Inc. | 950 Main Ave., Suite 200 | Cleveland, OH 44113