

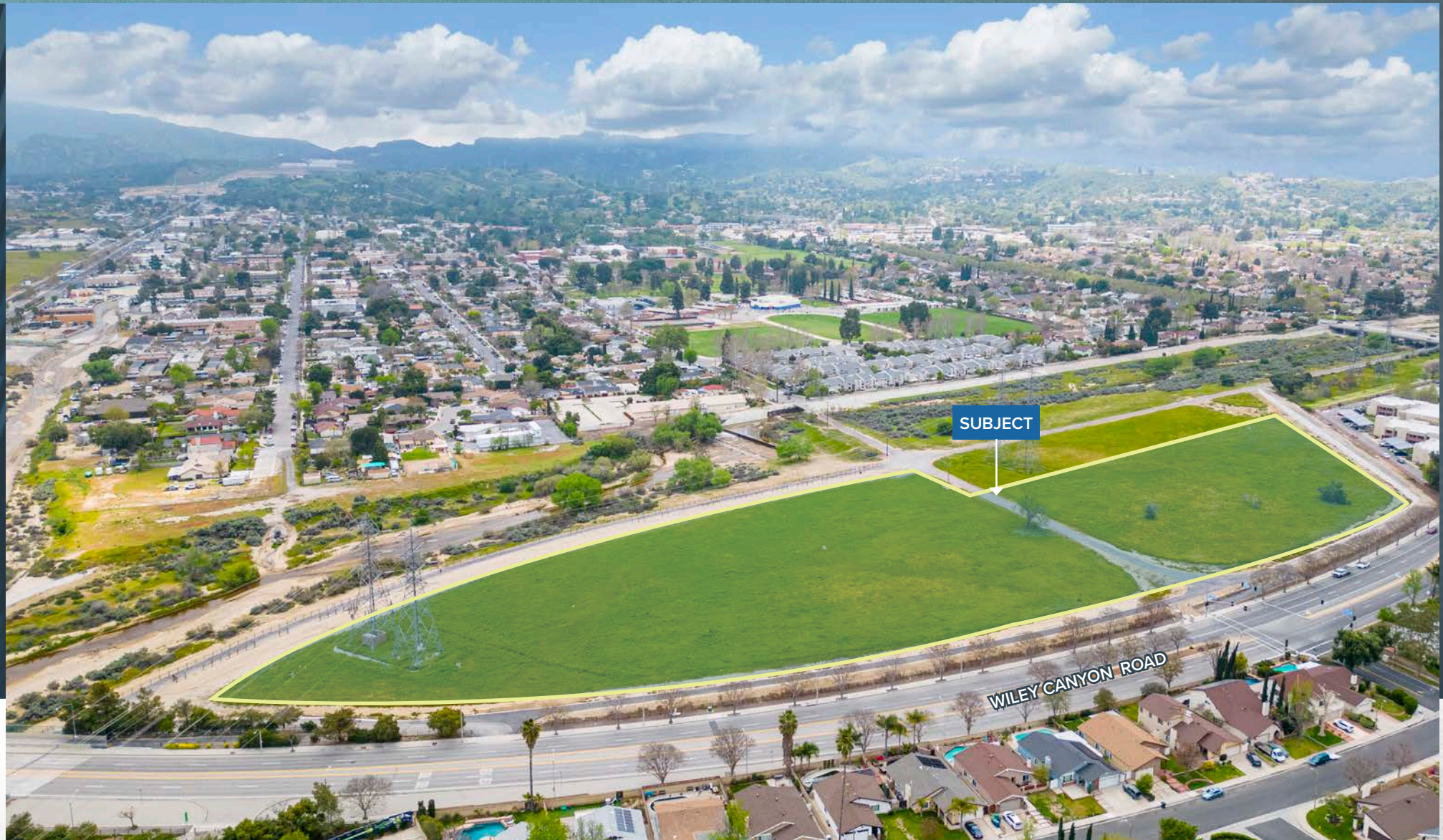


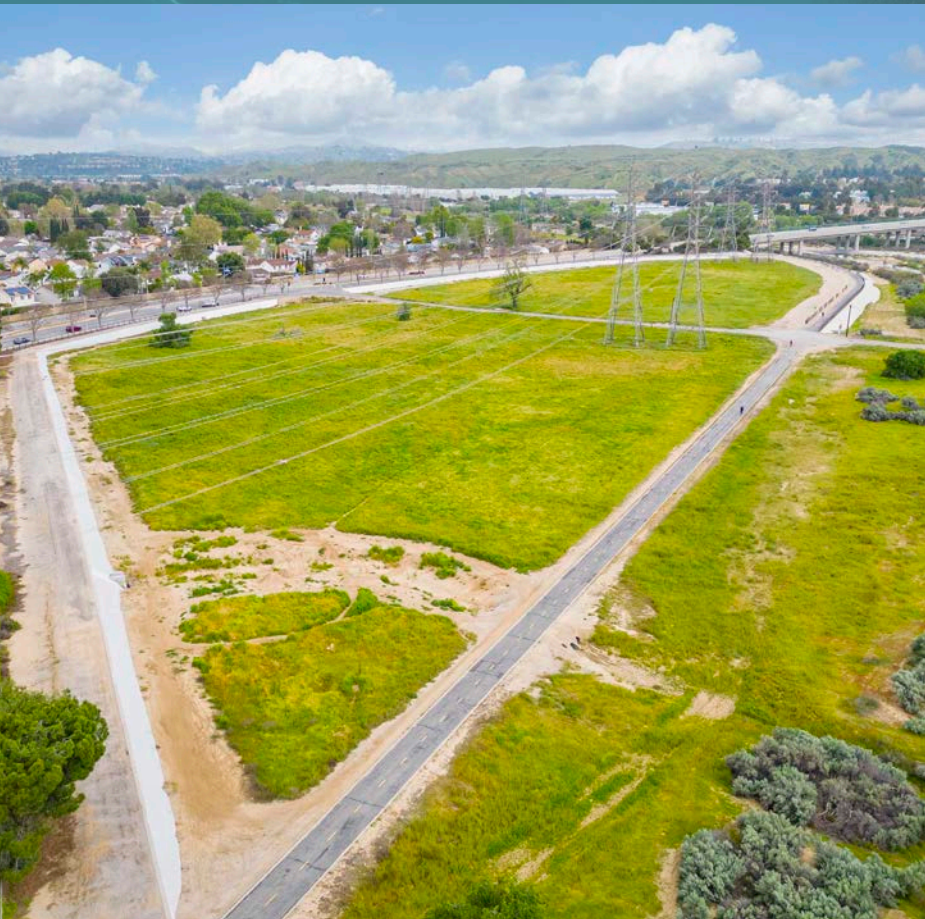
WILEY CANYON ROAD

12.7 Acres (7.5 Acres Net)

APNs 2859-004-023 & 2859-001-046

LAND PURCHASE OPPORTUNITY





Prime development site
in heart of Valencia community



Zoned RMH



City of Santa Clarita

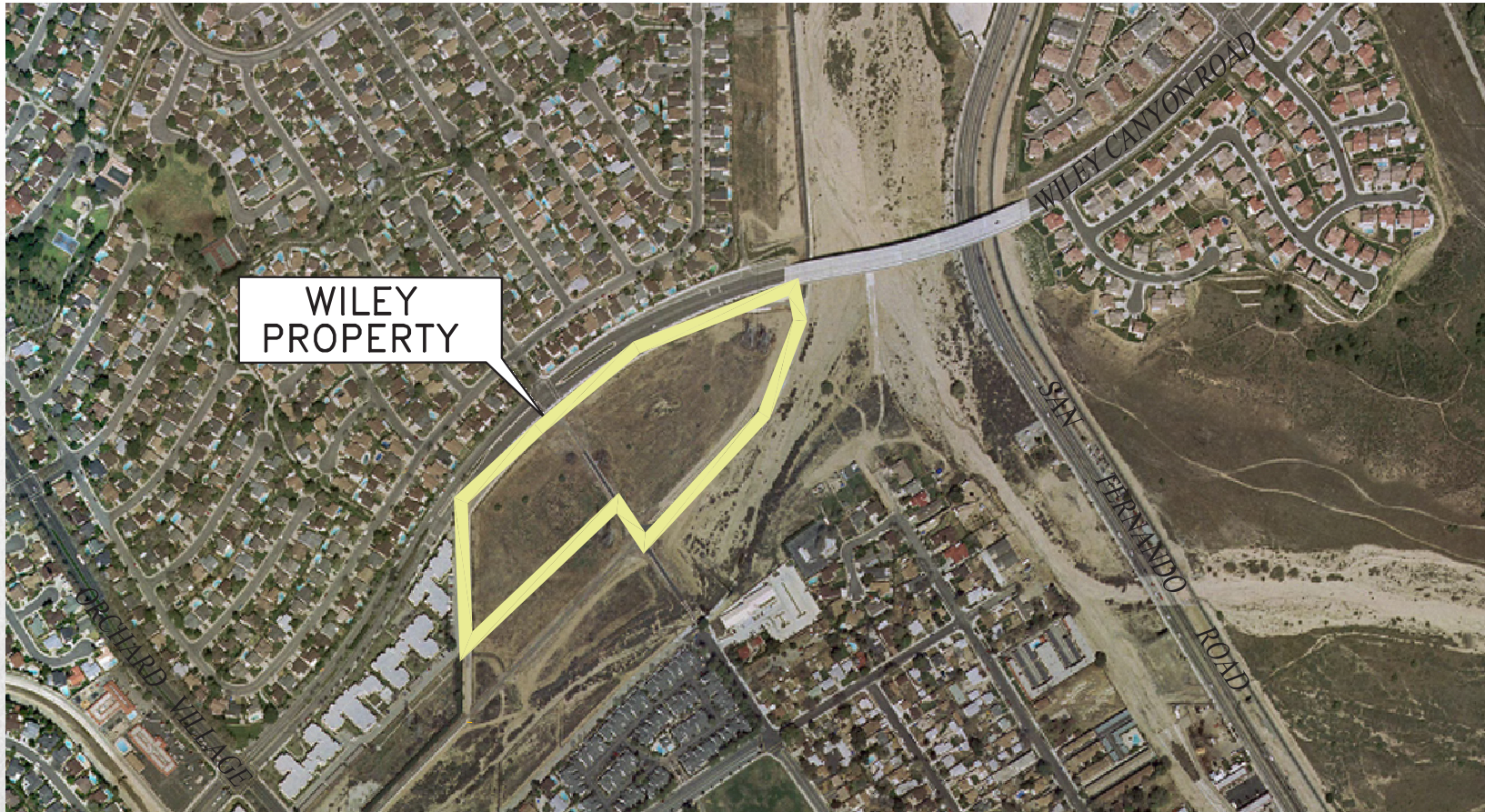


Quick access to I-5 Freeway and
Valencia Town Center

Residential Medium High (RMH) is a category which corresponds to grouped housing in townhomes, triplexes, fourplexes, and larger group housing. Private recreation amenities are provided onsite as well as common and private open space. Ownership generally would be through condominium or fee simple, when the complex is provided as rental housing. Specialized developments, such as senior housing and affordable housing, are economically possible at the upper end of the density range. The density of development for this category ranges from 15 du/acre to 25 du/acre, with a mid-range of 20 du/acre.

PROJECT FEATURES

SITE PLAN



LOCATION MAP



CON TACTS

FIVEPOINT

WILEY CANYON ROAD

CRAIG PETERS

Vice Chairman
+1 818 907 4616
Lic. 00906542
craig.peters@cbre.com

SAM GLENDON, SIOR

Senior Vice President
+1 818 502 6745
Lic. 01826689
sam.glendon@cbre.com

CBRE

© 2024 CBRE, Inc. All rights reserved. This information has been obtained from sources believed reliable but has not been verified for accuracy or completeness. You should conduct a careful, independent investigation of the property and verify all information. Any reliance on this information is solely at your own risk. CBRE and the CBRE logo are service marks of CBRE, Inc. All other marks displayed on this document are the property of their respective owners, and the use of such logos does not imply any affiliation with or endorsement of CBRE. Photos herein are the property of their respective owners. Use of these images without the express written consent of the owner is prohibited.