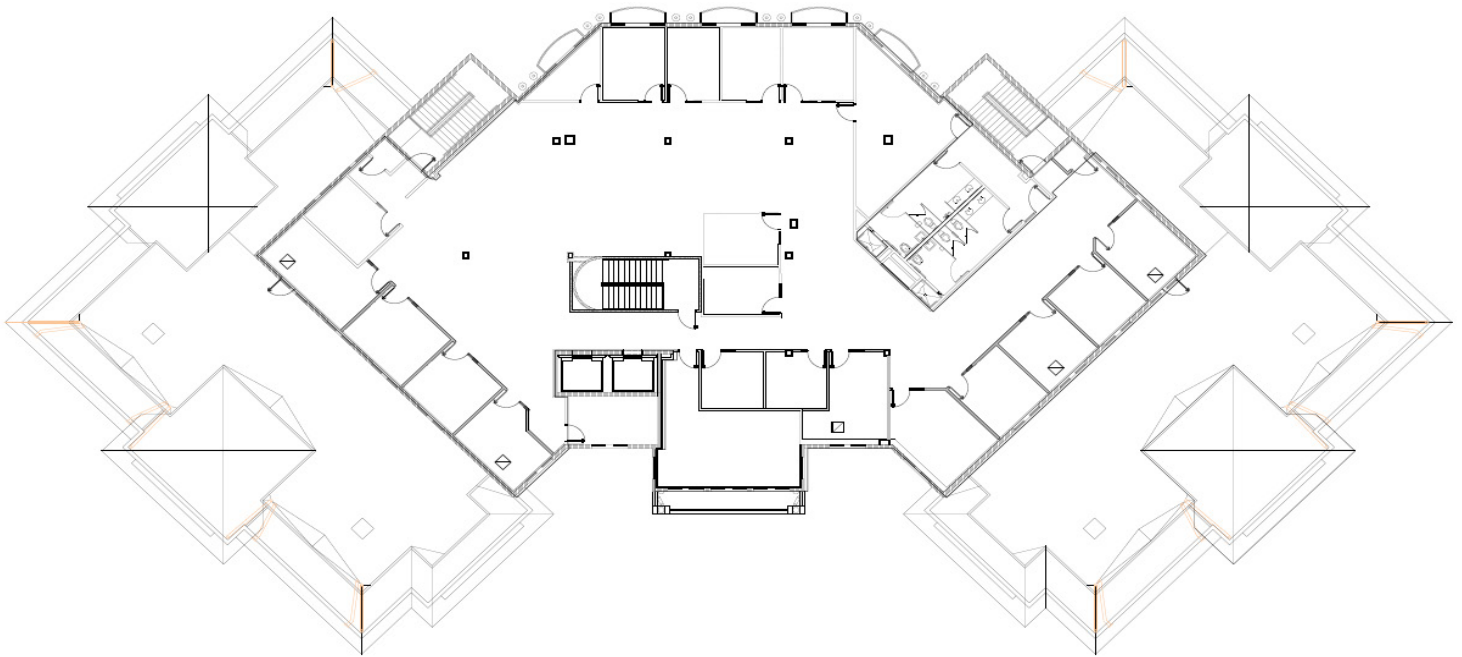


# 4300 PGA

3RD FLOOR - 9,563 SF



FOR MORE INFORMATION, PLEASE CONTACT:

**JOHN CRIDDLE**  
Executive Vice President  
M +1 561 283 5176  
[john.criddle@cbre.com](mailto:john.criddle@cbre.com)

**JOSEPH FREITAS**  
First Vice President  
M +1 561 512 8844  
[joe.freitas@cbre.com](mailto:joe.freitas@cbre.com)

**MAX PAWK**  
Senior Associate  
M +1 561 393 1670  
[max.pawk@cbre.com](mailto:max.pawk@cbre.com)

**PARAMOUNT**  
SPECIALTY FINANCE

**CBRE**

©2023 CBRE, Inc. All rights reserved. This information has been obtained from sources believed reliable, but has not been verified for accuracy or completeness. You should conduct a careful, independent investigation of the property and verify all information. Any reliance on this information is solely at your own risk. CBRE and the CBRE logo are service marks of CBRE, Inc. All other marks displayed on this document are the property of their respective owners, and the use of such logos does not imply any affiliation with or endorsement of CBRE. Photos herein are the property of their respective owners. Use of these images without the express written consent of the owner is prohibited.